

A10426

Leader in Biomolecular Solutions for Life Science



# JOSD1 Rabbit pAb

Catalog No.: A10426

## Basic Information

### Observed MW

27kDa

### Calculated MW

23kDa

### Category

Polyclonal Antibody

### Applications

WB,ELISA

### Cross-Reactivity

Human,Mouse,Rat

## Background

Predicted to enable thiol-dependent deubiquitinase. Predicted to be involved in protein deubiquitination. Located in membrane.

## Recommended Dilutions

**WB** 1:500 - 1:2000

**ELISA** Recommended starting concentration is 1 µg/mL. Please optimize the concentration based on your specific assay requirements.

## Immunogen Information

### Gene ID

9929

### Swiss Prot

Q15040

### Immunogen

Recombinant fusion protein containing a sequence corresponding to amino acids 1-202 of human JOSD1 (NP\_055691.1).

### Synonyms

dJ508I15.2; JOSD1

## Contact

 [www.abclonal.com](http://www.abclonal.com)

## Product Information

### Source

Rabbit

### Isotype

IgG

### Purification

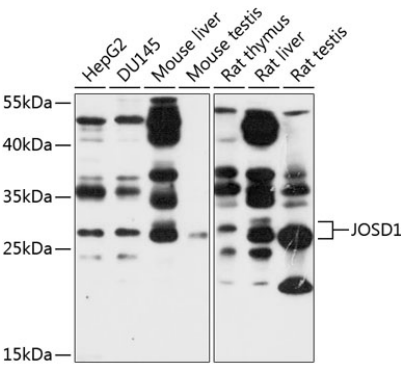
Affinity purification

### Storage

Store at -20°C. Avoid freeze / thaw cycles.

Buffer: PBS with 0.02% sodium azide,50% glycerol,pH7.3.

# Validation Data



Western blot analysis of various lysates using JOSD1 Rabbit pAb (A10426) at 1:1000 dilution.  
Secondary antibody: HRP-conjugated Goat anti-Rabbit IgG (H+L) (AS014) at 1:10000 dilution.  
Lysates/proteins: 25µg per lane.  
Blocking buffer: 3% nonfat dry milk in TBST.  
Detection: ECL Basic Kit (RM00020).  
Exposure time: 10s.