

A10403

Leader in Biomolecular Solutions for Life Science



METTL21C Rabbit pAb

Catalog No.: A10403

1 Publications

Basic Information

Observed MW

29kDa

Calculated MW

30kDa

Category

Polyclonal Antibody

Applications

WB,ELISA

Cross-Reactivity

Mouse,Rat

Background

Enables heat shock protein binding activity and protein-lysine N-methyltransferase activity. Involved in protein methylation. Located in nucleus. Part of protein-containing complex.

Recommended Dilutions

WB 1:500 - 1:2000

Immunogen Information

Gene ID

196541

Swiss Prot

Q5VZV1

Immunogen

Recombinant fusion protein containing a sequence corresponding to amino acids 1-264 of human METTL21C (NP_001010977.1).

Synonyms

C13orf39; METTL21C

Contact



www.abclonal.com

Product Information

Source

Rabbit

Isotype

IgG

Purification

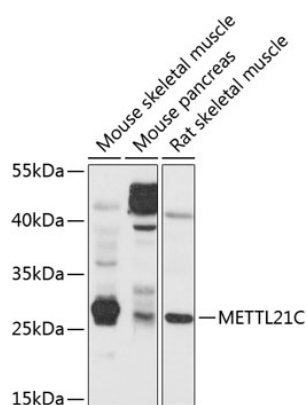
Affinity purification

Storage

Store at -20°C. Avoid freeze / thaw cycles.

Buffer: PBS with 0.02% sodium azide,50% glycerol,pH7.3.

Validation Data



Western blot analysis of various lysates using METTL21C Rabbit pAb (A10403) at 1:1000 dilution.

Secondary antibody: HRP Goat Anti-Rabbit IgG (H+L) (AS014) at 1:10000 dilution.

Lysates/proteins: 25µg per lane.

Blocking buffer: 3% nonfat dry milk in TBST.

Detection: ECL Basic Kit (RM00020).

Exposure time: 10s.