

A1040

Leader in Biomolecular Solutions for Life Science



PSMC1 Rabbit pAb

Catalog No.: A1040

Basic Information

Observed MW

49kDa

Calculated MW

49kDa

Category

Polyclonal Antibody

Applications

WB,IF/ICC

Cross-Reactivity

Human,Mouse,Rat

Background

The 26S proteasome is a multicatalytic proteinase complex with a highly ordered structure composed of 2 complexes, a 20S core and a 19S regulator. The 20S core is composed of 4 rings of 28 non-identical subunits; 2 rings are composed of 7 alpha subunits and 2 rings are composed of 7 beta subunits. The 19S regulator is composed of a base, which contains 6 ATPase subunits and 2 non-ATPase subunits, and a lid, which contains up to 10 non-ATPase subunits. Proteasomes are distributed throughout eukaryotic cells at a high concentration and cleave peptides in an ATP/ubiquitin-dependent process in a non-lysosomal pathway. An essential function of a modified proteasome, the immunoproteasome, is the processing of class I MHC peptides. This gene encodes one of the ATPase subunits, a member of the triple-A family of ATPases which have a chaperone-like activity. This subunit and a 20S core alpha subunit interact specifically with the hepatitis B virus X protein, a protein critical to viral replication. This subunit also interacts with the adenovirus E1A protein and this interaction alters the activity of the proteasome. Finally, this subunit interacts with ataxin-7, suggesting a role for the proteasome in the development of spinocerebellar ataxia type 7, a progressive neurodegenerative disorder.

Recommended Dilutions

WB 1:500 - 1:2000

IF/ICC 1:20 - 1:50

Immunogen Information

Gene ID

5700

Swiss Prot

P62191

Immunogen

Synthetic peptide. This information is considered to be commercially sensitive.

Synonyms

S4; p56; RPT2; P26S4; NEDGTH; PSMC1

Contact

 www.abclonal.com

Product Information

Source

Rabbit

Isotype

IgG

Purification

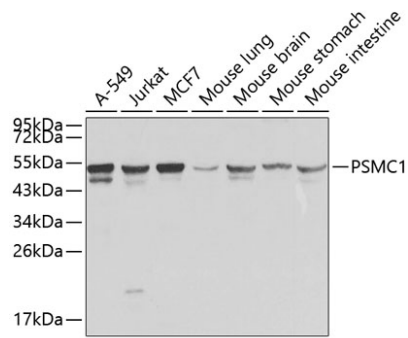
Affinity purification

Storage

Store at 4°C. Avoid freeze / thaw cycles.

Buffer: PBS with 0.02% sodium azide,pH7.3.

Validation Data



Western blot analysis of various lysates using PSMC1 Rabbit pAb (A1040).

Secondary antibody: HRP-conjugated Goat anti-Rabbit IgG (H+L) (AS014) at 1:10000 dilution.

Lysates/proteins: 25µg per lane.

Blocking buffer: 3% nonfat dry milk in TBST.