

A10396

Leader in Biomolecular Solutions for Life Science



MIEF1 Rabbit pAb

Catalog No.: A10396

Basic Information

Observed MW

51kDa

Calculated MW

51kDa

Category

Polyclonal Antibody

Applications

WB,ELISA

Cross-Reactivity

Human,Rat

Background

Enables ADP binding activity; GDP binding activity; and identical protein binding activity. Involved in several processes, including positive regulation of mitochondrial fission; positive regulation of mitochondrial translation; and positive regulation of protein targeting to membrane. Located in mitochondrial matrix and mitochondrial outer membrane. Colocalizes with mitochondrial large ribosomal subunit.

Recommended Dilutions

WB 1:100 - 1:500

ELISA Recommended starting concentration is 1 µg/mL. Please optimize the concentration based on your specific assay requirements.

Immunogen Information

Gene ID

54471

Swiss Prot

Q9NQG6

Immunogen

Recombinant protein (or fragment). This information is considered to be commercially sensitive.

Synonyms

MID51; LOR8F8; SMCR7L; AltMIEF1; HSU79252; MIEF1-MP; dJ1104E15.3; MIEF1

Contact

 www.abclonal.com

Product Information

Source

Rabbit

Isotype

IgG

Purification

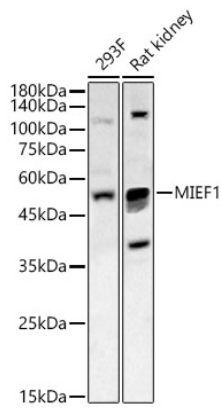
Affinity purification

Storage

Store at -20°C. Avoid freeze / thaw cycles.

Buffer: PBS containing 50% glycerol, preserved with proclin300 or sodium azide (as specified on the Certificate of Analysis), pH 7.3.

Validation Data



Western blot analysis of various lysates, using MIEF1 Rabbit pAb (A10396) at 1:400 dilution.

Secondary antibody: HRP-conjugated Goat anti-Rabbit IgG (H+L) (AS014) at 1:10000 dilution.

Lysates/proteins: 25µg per lane.

Blocking buffer: 3% nonfat dry milk in TBST.

Detection: ECL Basic Kit (RM00020).

Exposure time: 60s.