

A1036

Leader in Biomolecular Solutions for Life Science



SERPINA5 Rabbit pAb

Catalog No.: A1036

Basic Information

Observed MW

46kDa

Calculated MW

46kDa

Category

Polyclonal Antibody

Applications

WB

Cross-Reactivity

Human

Background

The protein encoded by this gene is a member of the serpin family of proteins, a group of proteins that inhibit serine proteases. This gene is one in a cluster of serpin genes located on the q arm of chromosome 14. This family member is a glycoprotein that can inhibit several serine proteases, including protein C and various plasminogen activators and kallikreins, and it thus plays diverse roles in hemostasis and thrombosis in multiple organs.

Recommended Dilutions

WB 1:500 - 1:2000

Immunogen Information

Gene ID

5104

Swiss Prot

P05154

Immunogen

Synthetic peptide. This information is considered to be commercially sensitive.

Synonyms

PCI; PAI3; PAI-3; PCI-B; PROC1; PLANH3; SERPINA5

Contact



www.abclonal.com

Product Information

Source

Rabbit

Isotype

IgG

Purification

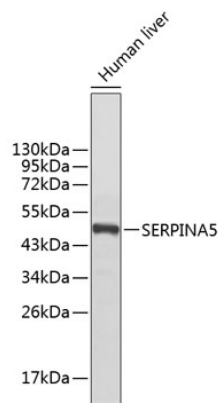
Affinity purification

Storage

Store at -20°C. Avoid freeze / thaw cycles.

Buffer: PBS with 0.02% sodium azide, 50% glycerol, pH7.3.

Validation Data



Western blot analysis of lysates from liver, using SERPINA5 Rabbit pAb (A1036).
Secondary antibody: HRP-conjugated Goat anti-Rabbit IgG (H+L) (AS014) at 1:10000 dilution.
Lysates/proteins: 25µg per lane.
Blocking buffer: 3% nonfat dry milk in TBST.