

A1033

Leader in Biomolecular Solutions for Life Science



# ENO1 Rabbit pAb

Catalog No.: A1033 **6 Publications**

## Basic Information

### Observed MW

47kDa/

### Calculated MW

47kDa

### Category

Polyclonal Antibody

### Applications

WB,IHC-P,IF/ICC,IP,ELISA

### Cross-Reactivity

Human,Mouse

## Background

This gene encodes alpha-enolase, one of three enolase isoenzymes found in mammals. Each isoenzyme is a homodimer composed of 2 alpha, 2 gamma, or 2 beta subunits, and functions as a glycolytic enzyme. Alpha-enolase in addition, functions as a structural lens protein (tau-crystallin) in the monomeric form. Alternative splicing of this gene results in a shorter isoform that has been shown to bind to the c-myc promoter and function as a tumor suppressor. Several pseudogenes have been identified, including one on the long arm of chromosome 1. Alpha-enolase has also been identified as an autoantigen in Hashimoto encephalopathy.

## Recommended Dilutions

<b>WB</b>	1:1000 - 1:5000
<b>IHC-P</b>	1:50 - 1:200
<b>IF/ICC</b>	1:50 - 1:200
<b>IP</b>	0.5µg-4µg antibody for 200µg-400µg extracts of whole cells
<b>ELISA</b>	Recommended starting concentration is 1 µg/mL. Please optimize the concentration based on your specific assay requirements.

## Immunogen Information

<b>Gene ID</b>	<b>Swiss Prot</b>
2023	P06733

### Immunogen

Recombinant fusion protein containing a sequence corresponding to amino acids 1-434 of human ENO1 (NP\_001419.1).

### Synonyms

NNE; PPH; MPB1; ENO1L1; ENO1-IT1; HEL-S-17;ENO1

## Product Information

<b>Source</b>	<b>Isotype</b>	<b>Purification</b>
Rabbit	IgG	Affinity purification

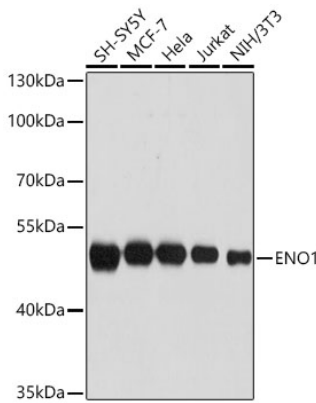
### Storage

Store at -20°C. Avoid freeze / thaw cycles.  
Buffer: PBS with 0.09% sodium azide,50% glycerol,pH7.3.

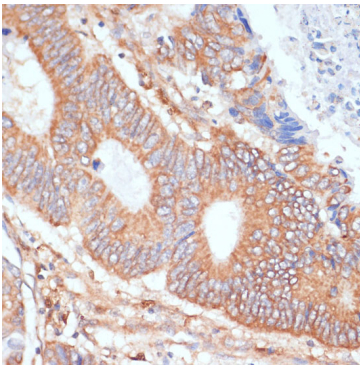
## Contact

 [www.abclonal.com](http://www.abclonal.com)

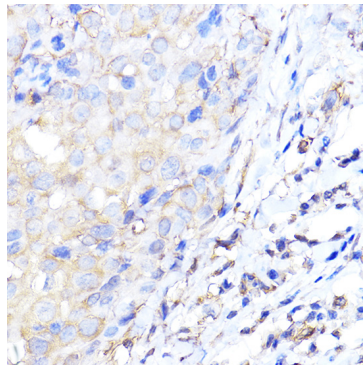
## Validation Data



Western blot analysis of various lysates using ENO1 Rabbit pAb (A1033) at 1:3000 dilution incubated overnight at 4°C.  
Secondary antibody: HRP-conjugated Goat anti-Rabbit IgG (H+L) (AS014) at 1:10000 dilution.  
Lysates/proteins: 25 µg per lane.  
Blocking buffer: 3% nonfat dry milk in TBST.  
Detection: ECL Basic Kit (RM00020)  
Exposure time: 1 s.



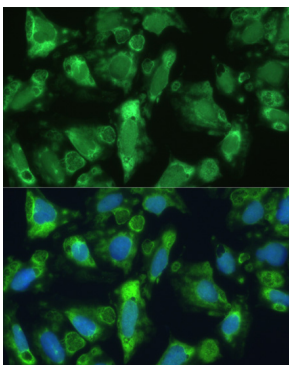
Immunohistochemistry analysis of paraffin-embedded Human colon carcinoma using ENO1 Rabbit pAb (A1033) at dilution of 1:100 (40x lens). Microwave antigen retrieval performed with 0.01M PBS Buffer (pH 7.2) prior to IHC staining.



Immunohistochemistry analysis of paraffin-embedded Human breast cancer using ENO1 Rabbit pAb (A1033) at dilution of 1:200 (40x lens). High pressure antigen retrieval performed with 0.01M Citrate Buffer (pH 6.0) prior to IHC staining.



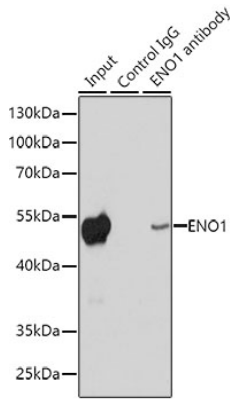
Immunofluorescence analysis of NIH-3T3 cells using ENO1 Rabbit pAb (A1033) at dilution of 1:100. Secondary antibody: Cy3-conjugated Goat anti-Rabbit IgG (H+L) (AS007) at 1:500 dilution. Blue: DAPI for nuclear staining.



Immunofluorescence analysis of U-2 OS cells using ENO1 Rabbit pAb (A1033) at dilution of 1:100. Secondary antibody: Cy3-conjugated Goat anti-Rabbit IgG (H+L) (AS007) at 1:500 dilution. Blue: DAPI for nuclear staining.

## Validation Data

---



Immunoprecipitation analysis of 200  $\mu\text{g}$  extracts of HeLa cells using 1  $\mu\text{g}$  ENO1 Rabbit pAb (A1033). Western blot was performed from the immunoprecipitate using ENO1 antibody (A1033) at a dilution of 1:1000.