

A10326

Leader in Biomolecular Solutions for Life Science



SPG11 Rabbit pAb

Catalog No.: A10326

Basic Information

Observed MW

280kDa

Calculated MW

279kDa

Category

Polyclonal Antibody

Applications

WB,ELISA

Cross-Reactivity

Human

Background

The protein encoded by this gene is a potential transmembrane protein that is phosphorylated upon DNA damage. Defects in this gene are a cause of spastic paraplegia type 11 (SPG11). Multiple transcript variants encoding different isoforms have been found for this gene.

Recommended Dilutions

WB 1:200 - 1:2000

Immunogen Information

Gene ID

80208

Swiss Prot

Q96JI7

Immunogen

Recombinant fusion protein containing a sequence corresponding to amino acids 550-750 of human SPG11 (NP_079413.3).

Synonyms

ALS5; CMT2X; KIAA1840; SPG11

Contact

 www.abclonal.com

Product Information

Source

Rabbit

Isotype

IgG

Purification

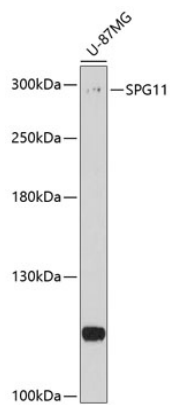
Affinity purification

Storage

Store at -20°C. Avoid freeze / thaw cycles.

Buffer: PBS with 0.02% sodium azide,50% glycerol,pH7.3.

Validation Data



Western blot analysis of lysates from U-87MG cells, using SPG11 Rabbit pAb (A10326) at 1:1000 dilution.

Secondary antibody: HRP Goat Anti-Rabbit IgG (H+L) (AS014) at 1:10000 dilution.

Lysates/proteins: 25µg per lane.

Blocking buffer: 3% nonfat dry milk in TBST.

Detection: ECL Enhanced Kit (RM00021).

Exposure time: 90s.