

A10314

Leader in Biomolecular Solutions for Life Science



KIF16B Rabbit pAb

Catalog No.: A10314

Basic Information

Observed MW

160kDa

Calculated MW

152kDa

Category

Polyclonal Antibody

Applications

WB,ELISA

Cross-Reactivity

Human

Background

The protein encoded by this gene is a kinesin-like protein that may be involved in intracellular trafficking. Three transcript variants encoding different isoforms have been found for this gene.

Recommended Dilutions

WB 1:200 - 1:2000

ELISA Recommended starting concentration is 1 µg/mL. Please optimize the concentration based on your specific assay requirements.

Immunogen Information

Gene ID

55614

Swiss Prot

Q96L93

Immunogen

Recombinant protein (or fragment). This information is considered to be commercially sensitive.

Synonyms

SNX23; C20orf23; KISC20ORF; KIF16B

Contact

 www.abclonal.com

Product Information

Source

Rabbit

Isotype

IgG

Purification

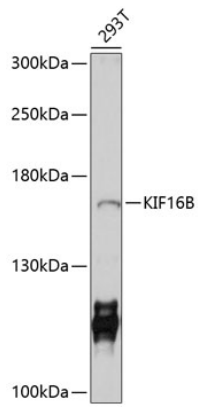
Affinity purification

Storage

Store at -20°C. Avoid freeze / thaw cycles.

Buffer: PBS with 0.02% sodium azide, 50% glycerol, pH7.3.

Validation Data



Western blot analysis of lysates from 293T cells, using KIF16B Rabbit pAb (A10314) at 1:1000 dilution.

Secondary antibody: HRP-conjugated Goat anti-Rabbit IgG (H+L) (AS014) at 1:10000 dilution.

Lysates/proteins: 25µg per lane.

Blocking buffer: 3% nonfat dry milk in TBST.

Detection: ECL Enhanced Kit (RM00021).

Exposure time: 30s.