

A10303

Leader in Biomolecular Solutions for Life Science



RXFP3 Rabbit pAb

Catalog No.: A10303

Basic Information

Observed MW

60kDa

Calculated MW

51kDa

Category

Polyclonal Antibody

Applications

WB,ELISA

Cross-Reactivity

Human,Mouse,Rat

Background

Predicted to enable G protein-coupled peptide receptor activity. Involved in positive regulation of cytokinesis. Predicted to be located in plasma membrane. Predicted to be integral component of plasma membrane.

Recommended Dilutions

WB 1:1000 - 1:2000

ELISA Recommended starting concentration is 1 µg/mL. Please optimize the concentration based on your specific assay requirements.

Immunogen Information

Gene ID

51289

Swiss Prot

Q9NSD7

Immunogen

Recombinant protein (or fragment). This information is considered to be commercially sensitive.

Synonyms

SALPR; RLN3R1; RXFPR3; GPCR135; RXFP3

Contact

 www.abclonal.com

Product Information

Source

Rabbit

Isotype

IgG

Purification

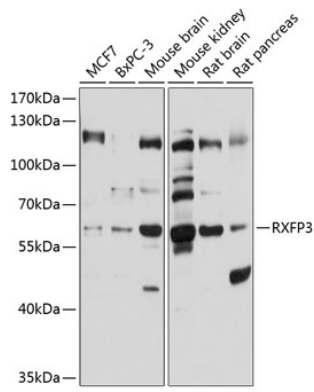
Affinity purification

Storage

Store at -20°C. Avoid freeze / thaw cycles.

Buffer: PBS with 0.02% sodium azide, 50% glycerol, pH7.3.

Validation Data



Western blot analysis of various lysates using RXFP3 Rabbit pAb (A10303) at 1:1000 dilution.
Secondary antibody: HRP-conjugated Goat anti-Rabbit IgG (H+L) (AS014) at 1:10000 dilution.
Lysates/proteins: 25µg per lane.
Blocking buffer: 3% nonfat dry milk in TBST.
Detection: ECL Basic Kit (RM00020).
Exposure time: 20s.