

A10283

Leader in Biomolecular Solutions for Life Science



# TUBGCP2 Rabbit pAb

Catalog No.: A10283

## Basic Information

### Observed MW

102kDa

### Calculated MW

103kDa

### Category

Polyclonal Antibody

### Applications

WB,ELISA

### Cross-Reactivity

Human,Mouse,Rat

## Background

Predicted to enable gamma-tubulin binding activity. Predicted to contribute to microtubule minus-end binding activity. Involved in brain development and neuron migration. Located in centrosome and nucleoplasm.

## Recommended Dilutions

**WB** 1:500 - 1:2000

**ELISA** Recommended starting concentration is 1 µg/mL. Please optimize the concentration based on your specific assay requirements.

## Immunogen Information

### Gene ID

10844

### Swiss Prot

Q9BSJ2

### Immunogen

Recombinant protein (or fragment). This information is considered to be commercially sensitive.

### Synonyms

ALP4; GCP2; GCP-2; SPC97; h103p; hGCP2; SPBC97; Spc97p; hSpc97; Grip103; PAMDDFS; TUBGCP2

## Contact

 [www.abclonal.com](http://www.abclonal.com)

## Product Information

### Source

Rabbit

### Isotype

IgG

### Purification

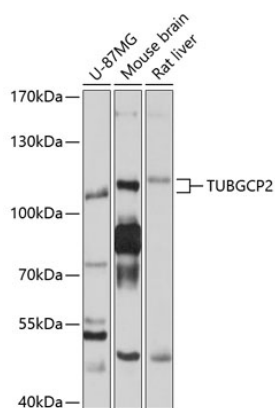
Affinity purification

### Storage

Store at -20°C. Avoid freeze / thaw cycles.

Buffer: PBS with 0.02% sodium azide, 50% glycerol, pH7.3.

## Validation Data



Western blot analysis of various lysates using TUBGCP2 Rabbit pAb (A10283) at 1:1000 dilution.  
Secondary antibody: HRP-conjugated Goat anti-Rabbit IgG (H+L) (AS014) at 1:10000 dilution.  
Lysates/proteins: 25µg per lane.  
Blocking buffer: 3% nonfat dry milk in TBST.  
Detection: ECL Basic Kit (RM00020).  
Exposure time: 5s.