

A10256

Leader in Biomolecular Solutions for Life Science



PLA2G10 Rabbit pAb

Catalog No.: A10256

Basic Information

Observed MW

18kDa

Calculated MW

18kDa

Category

Polyclonal Antibody

Applications

WB, ELISA

Cross-Reactivity

Human

Background

This gene encodes a member of the phospholipase A2 family of proteins. Alternative splicing results in multiple transcript variants, at least one of which encodes a preproprotein that is proteolytically processed to generate the mature enzyme. This calcium-dependent enzyme hydrolyzes glycerophospholipids to produce free fatty acids and lysophospholipids. In one example, this enzyme catalyzes the release of arachidonic acid from cell membrane phospholipids, thus playing a role in the production of various inflammatory lipid mediators, such as prostaglandins. The encoded protein may promote the survival of breast cancer cells through its role in lipid metabolism.

Recommended Dilutions

WB 1:500 - 1:2000

ELISA Recommended starting concentration is 1 µg/mL. Please optimize the concentration based on your specific assay requirements.

Immunogen Information

Gene ID

8399

Swiss Prot

O15496

Immunogen

A synthetic peptide corresponding to a sequence within amino acids 50-150 of human PLA2G10 (NP_003552.1).

Synonyms

SPLA2; GXPLA2; GXSPLA2; sPLA2-X; PLA2G10

Contact



www.abclonal.com

Product Information

Source

Rabbit

Isotype

IgG

Purification

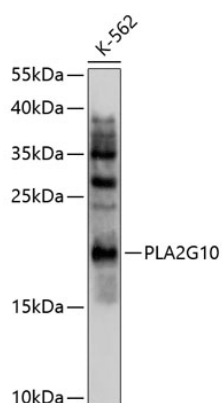
Affinity purification

Storage

Store at -20°C. Avoid freeze / thaw cycles.

Buffer: PBS with 0.02% sodium azide, 50% glycerol, pH7.3.

Validation Data



Western blot analysis of lysates from K562 cells, using PLA2G10 Rabbit pAb (A10256) at 1:1000 dilution.

Secondary antibody: HRP-conjugated Goat anti-Rabbit IgG (H+L) (AS014) at 1:10000 dilution.

Lysates/proteins: 25µg per lane.

Blocking buffer: 3% nonfat dry milk in TBST.

Detection: ECL Basic Kit (RM00020).

Exposure time: 90s.