

A10245

Leader in Biomolecular Solutions for Life Science



SLC10A1 Rabbit pAb

Catalog No.: A10245

Basic Information

Observed MW

38kDa

Calculated MW

39kDa

Category

Polyclonal Antibody

Applications

WB, ELISA

Cross-Reactivity

Human

Background

Predicted to enable bile acid:sodium symporter activity. Predicted to be involved in bile acid and bile salt transport. Predicted to act upstream of or within sodium ion transport. Located in membrane. Orthologous to human SLC10A1 (solute carrier family 10 member 1).

Recommended Dilutions

WB 1:500 - 1:2000

ELISA Recommended starting concentration is 1 µg/mL. Please optimize the concentration based on your specific assay requirements.

Immunogen Information

Gene ID

20493

Swiss Prot

Immunogen

Recombinant fusion protein containing a sequence corresponding to amino acids 244-349 of mouse SLC10A1 (O08705).

Synonyms

Ntcp; SLC10A1

Contact



www.abclonal.com

Product Information

Source

Rabbit

Isotype

IgG

Purification

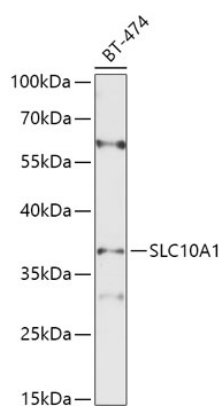
Affinity purification

Storage

Store at -20°C. Avoid freeze / thaw cycles.

Buffer: PBS with 0.02% sodium azide, 50% glycerol, pH 7.3.

Validation Data



Western blot analysis of lysates from BT-474 cells, using SLC10A1 Rabbit pAb (A10245) at 1:1000 dilution.

Secondary antibody: HRP-conjugated Goat anti-Rabbit IgG (H+L) (AS014) at 1:10000 dilution.

Lysates/proteins: 25µg per lane.

Blocking buffer: 3% nonfat dry milk in TBST.

Detection: ECL Basic Kit (RM00020).

Exposure time: 2min.