

A10165

Leader in Biomolecular Solutions for Life Science



IL36G Rabbit pAb

Catalog No.: A10165

1 Publications

Basic Information

Observed MW

18kDa

Calculated MW

18kDa

Category

Polyclonal Antibody

Applications

WB,ELISA,IF-P

Cross-Reactivity

Human,Mouse

Background

Enables cytokine activity. Acts upstream of or within negative regulation of myoblast differentiation; negative regulation of myoblast fusion; and positive regulation of interleukin-6 production. Located in extracellular space. Orthologous to human IL36G (interleukin 36 gamma).

Recommended Dilutions

WB 1:500 - 1:1000

IF-P 1:50 - 1:200

ELISA Recommended starting concentration is 1 µg/mL. Please optimize the concentration based on your specific assay requirements.

Immunogen Information

Gene ID

215257

Swiss Prot

Immunogen

This information is considered to be commercially sensitive.

Synonyms

If36g; Il1f9; IL-36gamma; IL36G

Contact

 www.abclonal.com

Product Information

Source

Rabbit

Isotype

IgG

Purification

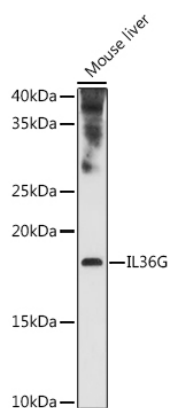
Affinity purification

Storage

Store at -20°C. Avoid freeze / thaw cycles.

Buffer: PBS with 0.09% Sodium azide,50% glycerol,pH7.3.

Validation Data



Western blot analysis of various lysates using IL36G Rabbit pAb (A10165) at 1:1000 dilution.

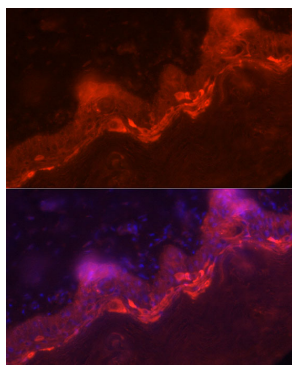
Secondary antibody: HRP-conjugated Goat anti-Rabbit IgG (H+L) (AS014) at 1:10000 dilution.

Lysates/proteins: 25µg per lane.

Blocking buffer: 3% nonfat dry milk in TBST.

Detection: ECL Enhanced Kit (RM00021).

Exposure time: 180s.



Immunofluorescence analysis of paraffin-embedded human skin using IL36G Rabbit pAb (A10165) at dilution of 1:100 (40x lens).

Secondary antibody: Cy3-conjugated Goat anti-Rabbit IgG (H+L) (AS007) at 1:500 dilution. Blue: DAPI for nuclear staining.