

A10148

Leader in Biomolecular Solutions for Life Science



MESP1 Rabbit pAb

Catalog No.: A10148

Basic Information

Observed MW

20kDa

Calculated MW

29kDa

Category

Polyclonal Antibody

Applications

WB,IHC-P,ELISA

Cross-Reactivity

Human,Mouse,Rat

Background

Enables DNA-binding transcription factor activity and transcription cis-regulatory region binding activity. Involved in several processes, including endothelial cell differentiation; heart development; and positive regulation of transcription by RNA polymerase II. Predicted to be part of chromatin. Predicted to be active in nucleus.

Recommended Dilutions

WB 1:200 - 1:1000

IHC-P 1:500 - 1:1000

ELISA Recommended starting concentration is 1 µg/mL. Please optimize the concentration based on your specific assay requirements.

Immunogen Information

Gene ID

55897

Swiss Prot

Q9BRJ9

Immunogen

Recombinant protein (or fragment). This information is considered to be commercially sensitive.

Synonyms

bHLHc5; MESP1

Contact

 www.abclonal.com

Product Information

Source

Rabbit

Isotype

IgG

Purification

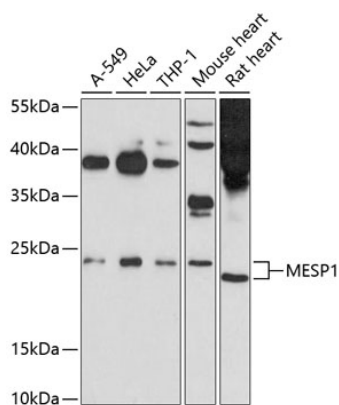
Affinity purification

Storage

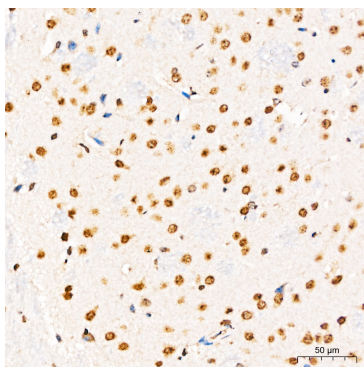
Store at -20°C. Avoid freeze / thaw cycles.

Buffer: PBS with 0.02% sodium azide, 50% glycerol, pH7.3.

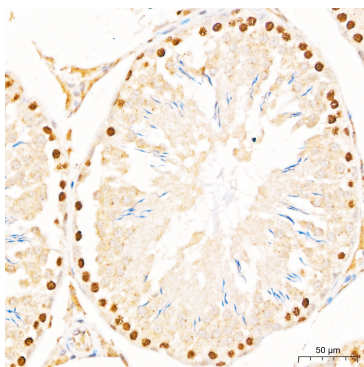
Validation Data



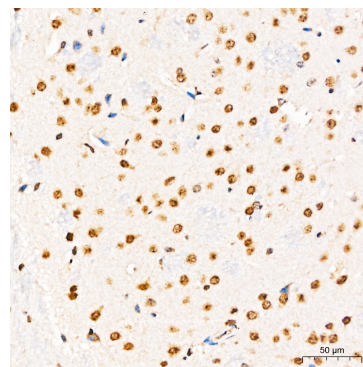
Western blot analysis of various lysates using MESP1 Rabbit pAb (A10148) at 1:1000 dilution.
 Secondary antibody: HRP-conjugated Goat anti-Rabbit IgG (H+L) (AS014) at 1:10000 dilution.
 Lysates/proteins: 25µg per lane.
 Blocking buffer: 3% nonfat dry milk in TBST.
 Detection: ECL Basic Kit (RM00020).
 Exposure time: 60s.



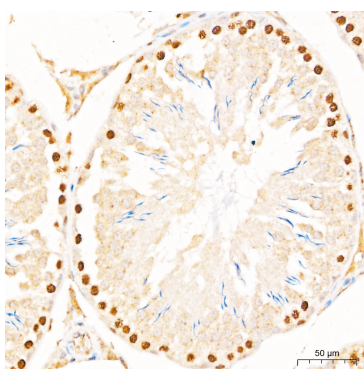
Immunohistochemistry analysis of paraffin-embedded Mouse brain tissue using MESP1 Rabbit pAb (A10148) at a dilution of 1:600 (40x lens). High pressure antigen retrieval performed with 0.01M Citrate Buffer (pH 6.0) prior to IHC staining.



Immunohistochemistry analysis of paraffin-embedded Rat testis tissue using MESP1 Rabbit pAb (A10148) at a dilution of 1:600 (40x lens). High pressure antigen retrieval performed with 0.01M Citrate Buffer (pH 6.0) prior to IHC staining.



Immunohistochemistry analysis of paraffin-embedded Mouse brain tissue using MESP1 Rabbit pAb (A10148) at a dilution of 1:600 (40x lens). High pressure antigen retrieval performed with 0.01M Citrate Buffer (pH 6.0) prior to IHC staining.



Immunohistochemistry analysis of paraffin-embedded Rat testis tissue using MESP1 Rabbit pAb (A10148) at a dilution of 1:600 (40x lens). High pressure antigen retrieval performed with 0.01M Citrate Buffer (pH 6.0) prior to IHC staining.