

A10143

Leader in Biomolecular Solutions for Life Science



CECR2 Rabbit pAb

Catalog No.: A10143

Basic Information

Observed MW

164kDa

Calculated MW

164kDa

Category

Polyclonal Antibody

Applications

WB, ELISA

Cross-Reactivity

Mouse, Rat

Background

This gene encodes a bromodomain-containing protein that is involved in chromatin remodeling, and may additionally play a role in DNA damage response. The encoded protein functions as part of an ATP-dependent complex that is involved in neurulation. This gene is a candidate gene for Cat Eye Syndrome. Alternative splicing results in multiple transcript variants.

Recommended Dilutions

WB 1:200 - 1:1000

ELISA Recommended starting concentration is 1 µg/mL. Please optimize the concentration based on your specific assay requirements.

Immunogen Information

Gene ID

27443

Swiss Prot

Q9BXF3

Immunogen

Recombinant fusion protein containing a sequence corresponding to amino acids 170-370 of human CECR2 (NP_113601.2).

Synonyms

CECR2

Contact

 www.abclonal.com

Product Information

Source

Rabbit

Isotype

IgG

Purification

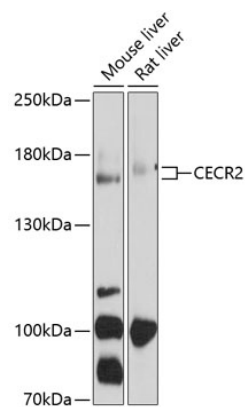
Affinity purification

Storage

Store at -20°C. Avoid freeze / thaw cycles.

Buffer: PBS with 0.02% sodium azide, 50% glycerol, pH 7.3.

Validation Data



Western blot analysis of various lysates using CECR2 Rabbit pAb (A10143) at 1:1000 dilution. Secondary antibody: HRP-conjugated Goat anti-Rabbit IgG (H+L) (AS014) at 1:10000 dilution. Lysates/proteins: 25µg per lane. Blocking buffer: 3% nonfat dry milk in TBST. Detection: ECL Enhanced Kit (RM00021). Exposure time: 60s.