

A10136

Leader in Biomolecular Solutions for Life Science



SEMA4D Rabbit pAb

Catalog No.: A10136

2 Publications

Basic Information

Observed MW

150kDa

Calculated MW

96kDa

Category

Polyclonal Antibody

Applications

WB, ELISA

Cross-Reactivity

Human

Background

Enables identical protein binding activity; semaphorin receptor binding activity; and transmembrane signaling receptor activity. Involved in several processes, including positive regulation of phosphatidylinositol 3-kinase signaling; regulation of neuron projection development; and regulation of phosphate metabolic process. Is integral component of plasma membrane.

Recommended Dilutions

WB 1:200 - 1:1000

ELISA Recommended starting concentration is 1 µg/mL. Please optimize the concentration based on your specific assay requirements.

Immunogen Information

Gene ID
10507

Swiss Prot
Q92854

Immunogen

Recombinant protein (or fragment). This information is considered to be commercially sensitive.

Synonyms

A8; GR3; BB18; CD100; COLL4; SEMAJ; coll-4; C9orf164; M-sema-G; SEMA4D

Contact



www.abclonal.com

Product Information

Source
Rabbit

Isotype
IgG

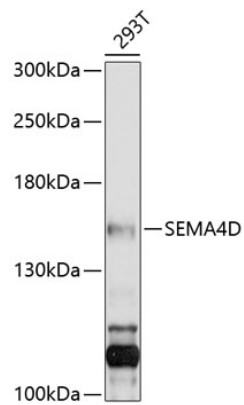
Purification
Affinity purification

Storage

Store at -20°C. Avoid freeze / thaw cycles.

Buffer: PBS with 0.02% sodium azide, 50% glycerol, pH 7.3.

Validation Data



Western blot analysis of lysates from 293T cells, using SEMA4D Rabbit pAb (A10136) at 1:1000 dilution.

Secondary antibody: HRP-conjugated Goat anti-Rabbit IgG (H+L) (AS014) at 1:10000 dilution.

Lysates/proteins: 25µg per lane.

Blocking buffer: 3% nonfat dry milk in TBST.

Detection: ECL Enhanced Kit (RM00021).

Exposure time: 10s.