

A10088

Leader in Biomolecular Solutions for Life Science



SCN7A Rabbit pAb

Catalog No.: A10088

Basic Information

Observed MW

260kDa

Calculated MW

193kDa

Category

Polyclonal Antibody

Applications

WB, ELISA

Cross-Reactivity

Human, Mouse

Background

This gene encodes one of the many voltage-gated sodium channel proteins. For proper functioning of neurons and muscles during action potentials, voltage-gated sodium channels direct sodium ion diffusion for membrane depolarization. This sodium channel protein has some atypical characteristics; the similarity between the human and mouse proteins is lower compared to other orthologous sodium channel pairs. Also, the S4 segments, which sense voltage changes, have fewer positive charged residues than in other sodium channels; domain 4 has fewer arginine and lysine residues compared to other sodium channel proteins. Several alternatively spliced transcript variants exist, but the full-length natures of all of them remain unknown.

Recommended Dilutions

WB 1:500 - 1:2000

ELISA Recommended starting concentration is 1 µg/mL. Please optimize the concentration based on your specific assay requirements.

Immunogen Information

Gene ID

6332

Swiss Prot

Q01118

Immunogen

Recombinant fusion protein containing a sequence corresponding to amino acids 265-368 of human SCN7A (NP_002967.2).

Synonyms

NaG; SCN6A; Nav2.1; Nav2.2; SCN7A

Contact

 www.abclonal.com

Product Information

Source

Rabbit

Isotype

IgG

Purification

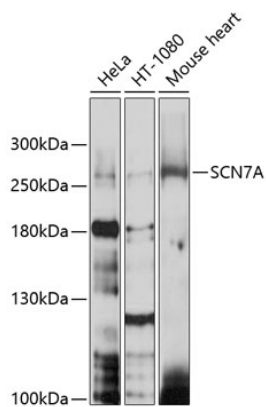
Affinity purification

Storage

Store at -20°C. Avoid freeze / thaw cycles.

Buffer: PBS with 0.02% sodium azide, 50% glycerol, pH 7.3.

Validation Data



Western blot analysis of various lysates using SCN7A Rabbit pAb (A10088) at 1:1000 dilution.

Secondary antibody: HRP-conjugated Goat anti-Rabbit IgG (H+L) (AS014) at 1:10000 dilution.

Lysates/proteins: 25µg per lane.

Blocking buffer: 3% nonfat dry milk in TBST.

Detection: ECL Basic Kit (RM00020).

Exposure time: 10s.