

A10045

Leader in Biomolecular Solutions for Life Science



ZC3H15 Rabbit pAb

Catalog No.: A10045

Basic Information

Observed MW

65kDa

Calculated MW

49kDa

Category

Polyclonal Antibody

Applications

WB,ELISA

Cross-Reactivity

Human,Mouse

Background

Enables RNA binding activity and cadherin binding activity. Involved in positive regulation of GTPase activity. Located in cytosol.

Recommended Dilutions

WB 1:500 - 1:2000

ELISA Recommended starting concentration is 1 µg/mL. Please optimize the concentration based on your specific assay requirements.

Immunogen Information

Gene ID

55854

Swiss Prot

Q8WU90

Immunogen

Recombinant protein (or fragment). This information is considered to be commercially sensitive.

Synonyms

DFRP1; HT010; LEREPO4; MSTP012; ZC3H15

Contact

 www.abclonal.com

Product Information

Source

Rabbit

Isotype

IgG

Purification

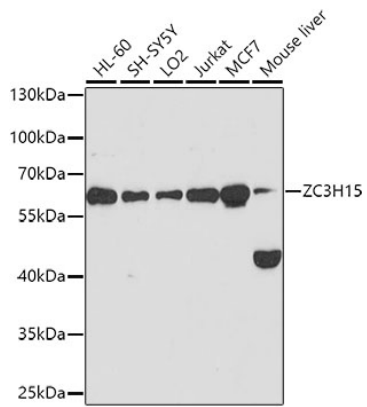
Affinity purification

Storage

Store at -20°C. Avoid freeze / thaw cycles.

Buffer: PBS containing 50% glycerol, preserved with proclin300 or sodium azide (as specified on the Certificate of Analysis), pH 7.3.

Validation Data



Western blot analysis of various lysates using ZC3H15 Rabbit pAb (A10045) at 1:1000 dilution.

Secondary antibody: HRP-conjugated Goat anti-Rabbit IgG (H+L) (AS014) at 1:10000 dilution.

Lysates/proteins: 25µg per lane.

Blocking buffer: 3% nonfat dry milk in TBST.

Detection: ECL Basic Kit (RM00020).

Exposure time: 90s.