

A10043

Leader in Biomolecular Solutions for Life Science



## TBL3 Rabbit pAb

Catalog No.: A10043

### Basic Information

#### Observed MW

110kDa

#### Calculated MW

89kDa

#### Category

Polyclonal Antibody

#### Applications

WB, ELISA

#### Cross-Reactivity

Human, Mouse

### Background

The protein encoded by this gene has sequence similarity with members of the WD40 repeat-containing protein family. The WD40 group is a large family of proteins, which appear to have a regulatory function. It is believed that the WD40 repeats mediate protein-protein interactions and members of the family are involved in signal transduction, RNA processing, gene regulation, vesicular trafficking, cytoskeletal assembly and may play a role in the control of cytotypic differentiation. This gene has multiple polyadenylation sites. It might have multiple alternatively spliced transcript variants but the variants have not been fully described yet.

### Recommended Dilutions

**WB** 1:1000 - 1:4000

**ELISA** Recommended starting concentration is 1 µg/mL. Please optimize the concentration based on your specific assay requirements.

### Immunogen Information

#### Gene ID

10607

#### Swiss Prot

Q12788

#### Immunogen

Recombinant fusion protein containing a sequence corresponding to amino acids 579-808 of human TBL3 (NP\_006444.2).

#### Synonyms

SAZD; UTP13; TBL3

### Contact



[www.abclonal.com](http://www.abclonal.com)

### Product Information

#### Source

Rabbit

#### Isotype

IgG

#### Purification

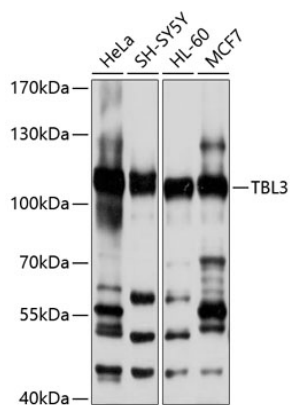
Affinity purification

#### Storage

Store at -20°C. Avoid freeze / thaw cycles.

Buffer: PBS with 0.02% sodium azide, 50% glycerol, pH 7.3.

## Validation Data



Western blot analysis of various lysates using TBL3 Rabbit pAb (A10043) at 1:1000 dilution.  
Secondary antibody: HRP-conjugated Goat anti-Rabbit IgG (H+L) (AS014) at 1:10000 dilution.  
Lysates/proteins: 25µg per lane.  
Blocking buffer: 3% nonfat dry milk in TBST.  
Detection: ECL Basic Kit (RM00020).  
Exposure time: 10s.