

A1002SP

Leader in Biomolecular Solutions for Life Science



YAP1 Rabbit pAb

Catalog No.: A1002SP **49 Publications**

Basic Information

Observed MW

75 kDa

Calculated MW

36-54 kDa

Category

Polyclonal Antibody

Applications

WB,IHC-P,IF/ICC,IP,ELISA

Cross-Reactivity

Human,Mouse

Background

This gene encodes a downstream nuclear effector of the Hippo signaling pathway which is involved in development, growth, repair, and homeostasis. This gene is known to play a role in the development and progression of multiple cancers as a transcriptional regulator of this signaling pathway and may function as a potential target for cancer treatment. Alternative splicing results in multiple transcript variants encoding different isoforms.

Recommended Dilutions

WB 1:1000 - 1:3000

IP 0.5µg-4µg antibody for
200µg-400µg extracts
of whole cells

IF/ICC 1:100 - 1:300

IHC-P 1:200 - 1:800

ELISA Recommended starting
concentration is 1
µg/mL. Please optimize
the concentration
based on your specific
assay requirements.For
high-ratio antibody
dilutions (≥1:10000)

Immunogen Information

Gene ID

10413/22601

Swiss Prot

P46937/P46938

Immunogen

This information is considered to be commercially sensitive.

Synonyms

YAP; YKI; COB1; YAP2; YAP-1; YAP65; YAP1

Product Information

Source

Rabbit

Isotype

IgG

Purification

Affinity purification

Storage

Store at -20°C. Avoid freeze / thaw cycles.

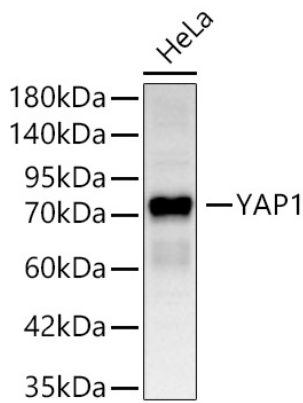
Buffer: PBS, pH 7.3, containing 50% glycerol. Preserved with Proclin300 or sodium azide. May contain 0.05% BSA as specified on the Certificate of Analysis.

Contact

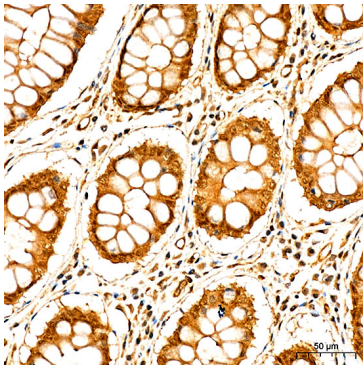


www.abclonal.com

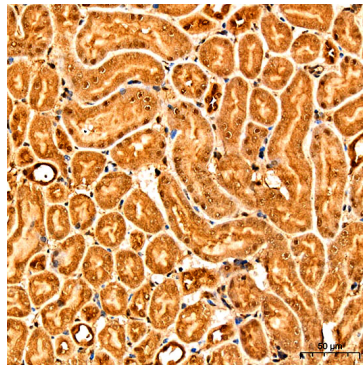
Validation Data



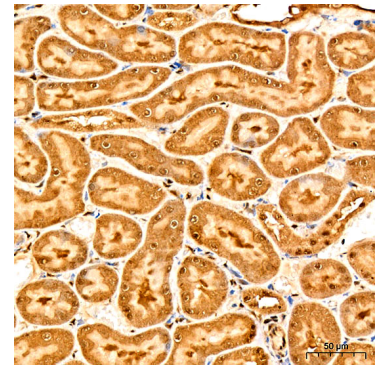
Western blot analysis of lysates from HeLa cells using YAP1 Rabbit pAb (A1002SP) at 1:2000 dilution incubated overnight at 4°C.
Secondary antibody: HRP-conjugated Goat anti-Rabbit IgG (H+L) (AS014) at 1:10000 dilution.
Lysates/proteins: 25 µg per lane.
Blocking buffer: 3% nonfat dry milk in TBST.
Detection: ECL Basic Kit (RM00020).
Exposure time: 30 s.



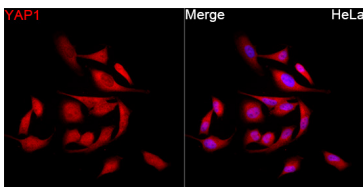
Immunohistochemistry analysis of paraffin-embedded Human colon carcinoma tissue using YAP1 Rabbit pAb (A1002SP) at a dilution of 1:250 (40x lens). High pressure antigen retrieval performed with 0.01M Citrate Buffer (pH 6.0) prior to IHC staining.



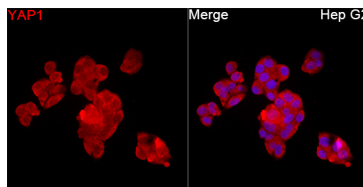
Immunohistochemistry analysis of paraffin-embedded Mouse kidney tissue using YAP1 Rabbit pAb (A1002SP) at a dilution of 1:250 (40x lens). High pressure antigen retrieval performed with 0.01M Citrate Buffer (pH 6.0) prior to IHC staining.



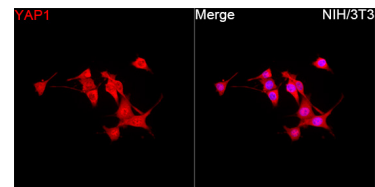
Immunohistochemistry analysis of paraffin-embedded Rat kidney tissue using YAP1 Rabbit pAb (A1002SP) at a dilution of 1:250 (40x lens). High pressure antigen retrieval performed with 0.01M Citrate Buffer (pH 6.0) prior to IHC staining.



Immunofluorescence analysis of HeLa cells using YAP1 Rabbit pAb (A1002SP) at a dilution of 1:250 (40x lens). Secondary antibody: Cy3-conjugated Goat anti-Rabbit IgG (H+L) (AS007) at 1:500 dilution. Blue: DAPI for nuclear staining.

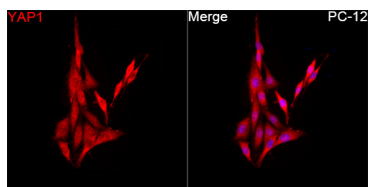


Immunofluorescence analysis of Hep G2 cells using YAP1 Rabbit pAb (A1002SP) at a dilution of 1:1:250 (40x lens). Secondary antibody: Cy3-conjugated Goat anti-Rabbit IgG (H+L) (AS007) at 1:500 dilution. Blue: DAPI for nuclear staining.



Immunofluorescence analysis of NIH/3T3 cells using YAP1 Rabbit pAb (A1002SP) at a dilution of 1:100 (40x lens). Secondary antibody: Cy3-conjugated Goat anti-Rabbit IgG (H+L) (AS007) at 1:500 dilution. Blue: DAPI for nuclear staining.

Validation Data



Immunofluorescence analysis of PC-12 cells using YAP1 Rabbit pAb (A1002SP) at a dilution of 1:1:250 (40x lens). Secondary antibody: Cy3-conjugated Goat anti-Rabbit IgG (H+L) (AS007) at 1:500 dilution. Blue: DAPI for nuclear staining.