

A10022

Leader in Biomolecular Solutions for Life Science



## [KO Validated] LRRC59 Rabbit pAb

Catalog No.: A10022 **KO** Validated

### Basic Information

**Observed MW**

35kDa

**Calculated MW**

35kDa

**Category**

Polyclonal Antibody

**Applications**

WB,IHC-P,ELISA

**Cross-Reactivity**

Human,Mouse,Rat

### Background

Enables RNA binding activity and cadherin binding activity. Predicted to be involved in positive regulation of Ras protein signal transduction and signal transduction. Located in endoplasmic reticulum and mitochondrial nucleoid.

### Recommended Dilutions

**WB** 1:500 - 1:1000

**IHC-P** 1:50 - 1:200

### Immunogen Information

**Gene ID**

55379

**Swiss Prot**

Q96AG4

**Immunogen**

Recombinant fusion protein containing a sequence corresponding to amino acids 1-244 of human LRRC59 (NP\_060979.2).

**Synonyms**

p34; PRO1855; 59

### Contact



[www.abclonal.com](http://www.abclonal.com)

### Product Information

**Source**

Rabbit

**Isotype**

IgG

**Purification**

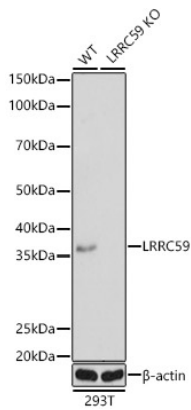
Affinity purification

**Storage**

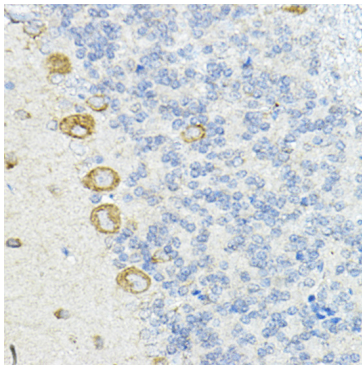
Store at -20°C. Avoid freeze / thaw cycles.

Buffer: PBS with 0.02% sodium azide, 50% glycerol, pH7.3.

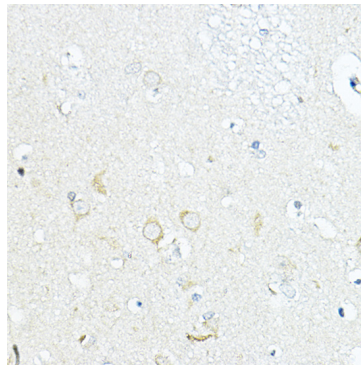
## Validation Data



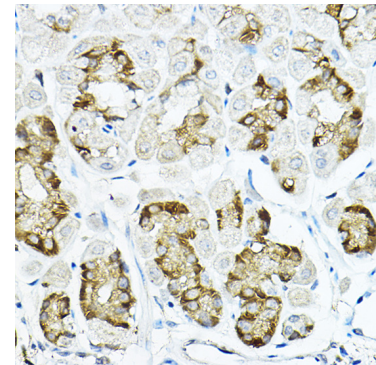
Western blot analysis of lysates from wild type (WT) and LRRC59 knockout (KO) 293T(KO) cells, using [KO Validated] LRRC59 Rabbit pAb (A10022) at 1:1000 dilution. Secondary antibody: HRP Goat Anti-Rabbit IgG (H+L) (AS014) at 1:10000 dilution. Lysates/proteins: 25µg per lane. Blocking buffer: 3% nonfat dry milk in TBST. Detection: ECL Basic Kit (RM00020). Exposure time: 1s.



Immunohistochemistry analysis of paraffin-embedded rat cerebellum using LRRC59 Rabbit pAb (A10022) at dilution of 1:100 (40x lens). Perform high pressure antigen retrieval with 10 mM citrate buffer pH 6.0 before commencing with IHC staining protocol.



Immunohistochemistry analysis of paraffin-embedded human brain using LRRC59 Rabbit pAb (A10022) at dilution of 1:100 (40x lens). Perform high pressure antigen retrieval with 10 mM citrate buffer pH 6.0 before commencing with IHC staining protocol.



Immunohistochemistry analysis of paraffin-embedded mouse stomach using LRRC59 Rabbit pAb (A10022) at dilution of 1:100 (40x lens). Perform high pressure antigen retrieval with 10 mM citrate buffer pH 6.0 before commencing with IHC staining protocol.