

A10013

Leader in Biomolecular Solutions for Life Science



## RPRM Rabbit pAb

Catalog No.: A10013

### Basic Information

**Observed MW**

20kDa

**Calculated MW**

12kDa

**Category**

Polyclonal Antibody

**Applications**

WB,ELISA

**Cross-Reactivity**

Mouse

### Background

Predicted to be involved in regulation of mitotic cell cycle. Predicted to act upstream of or within regulation of cell cycle. Predicted to be integral component of membrane. Predicted to be active in cytoplasm.

### Recommended Dilutions

**WB** 1:500 - 1:2000

**ELISA** Recommended starting concentration is 1 µg/mL. Please optimize the concentration based on your specific assay requirements.

### Immunogen Information

**Gene ID**

56475

**Swiss Prot**

Q9NS64

**Immunogen**

Recombinant fusion protein containing a sequence corresponding to amino acids 1-109 of human RPRM (NP\_062819.1).

**Synonyms**

REPRIMO; RPRM

### Contact



[www.abclonal.com](http://www.abclonal.com)

### Product Information

**Source**

Rabbit

**Isotype**

IgG

**Purification**

Affinity purification

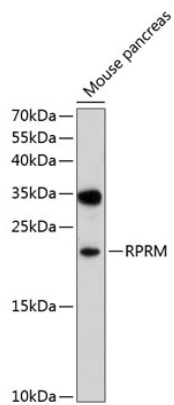
**Storage**

Store at -20°C. Avoid freeze / thaw cycles.

Buffer: PBS with 0.02% sodium azide, 50% glycerol, pH7.3.

## Validation Data

---



Western blot analysis of lysates from mouse pancreas, using RPRM Rabbit pAb (A10013) at 1:1000 dilution.

Secondary antibody: HRP-conjugated Goat anti-Rabbit IgG (H+L) (AS014) at 1:10000 dilution.

Lysates/proteins: 25µg per lane.

Blocking buffer: 3% nonfat dry milk in TBST.

Detection: ECL Basic Kit (RM00020).

Exposure time: 30s.