

A0820

Leader in Biomolecular Solutions for Life Science



SOCS1 Rabbit pAb

Catalog No.: A0820

Basic Information

Observed MW

26kDa

Calculated MW

24kDa

Category

Polyclonal Antibody

Applications

WB,IHC-P,FC

Cross-Reactivity

Mouse,Rat

Background

This gene encodes a member of the STAT-induced STAT inhibitor (SSI), also known as suppressor of cytokine signaling (SOCS), family. SSI family members are cytokine-inducible negative regulators of cytokine signaling. The expression of this gene can be induced by a subset of cytokines, including IL2, IL3 erythropoietin (EPO), CSF2/GM-CSF, and interferon (IFN)-gamma. The protein encoded by this gene functions downstream of cytokine receptors, and takes part in a negative feedback loop to attenuate cytokine signaling. Knockout studies in mice suggested the role of this gene as a modulator of IFN-gamma action, which is required for normal postnatal growth and survival.

Recommended Dilutions

WB	1:500 - 1:1000
IHC-P	1:50 - 1:200
FC	1:20 - 1:50

Immunogen Information

Gene ID	Swiss Prot
8651	O15524

Immunogen

A synthetic peptide of human SOCS1

Synonyms

JAB; CIS1; SSI1; TIP3; CISH1; SSI-1; TIP-3; AISIMD; SOCS-1; SOCS1

Contact

 www.abclonal.com

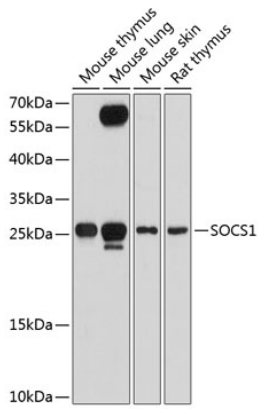
Product Information

Source	Isotype	Purification
Rabbit	IgG	Affinity purification

Storage

Store at 4°C. Avoid freeze / thaw cycles.
Buffer: PBS with 0.02% sodium azide,pH7.3.

Validation Data



Western blot analysis of various lysates using SOCS1 Rabbit pAb (A0820) at 1:1000 dilution.

Secondary antibody: HRP-conjugated Goat anti-Rabbit IgG (H+L) (AS014) at 1:10000 dilution.

Lysates/proteins: 25 μ g per lane.

Blocking buffer: 3% nonfat dry milk in TBST.

Detection: ECL Basic Kit (RM00020).

Exposure time: 90s.