

A0802

Leader in Biomolecular Solutions for Life Science



# Calbindin Rabbit pAb

Catalog No.: A0802

4 Publications

## Basic Information

### Observed MW

30kDa

### Calculated MW

30kDa

### Category

Polyclonal Antibody

### Applications

WB,IHC-P,ELISA

### Cross-Reactivity

Human,Mouse,Rat

## Background

The protein encoded by this gene is a member of the calcium-binding protein superfamily that includes calmodulin and troponin C. Originally described as a 27 kDa protein, it is now known to be a 28 kDa protein. It contains four active calcium-binding domains, and has two modified domains that are thought to have lost their calcium binding capability. This protein is thought to buffer entry of calcium upon stimulation of glutamate receptors. Depletion of this protein was noted in patients with Huntington disease.

## Recommended Dilutions

WB 1:500 - 1:2000

IHC-P 1:50 - 1:100

## Immunogen Information

### Gene ID

793

### Swiss Prot

P05937

### Immunogen

Recombinant fusion protein containing a sequence corresponding to amino acids 1-261 of human Calbindin (NP\_004920.1).

### Synonyms

CALB; D-28K; Calbindin

## Contact



[www.abclonal.com](http://www.abclonal.com)

## Product Information

### Source

Rabbit

### Isotype

IgG

### Purification

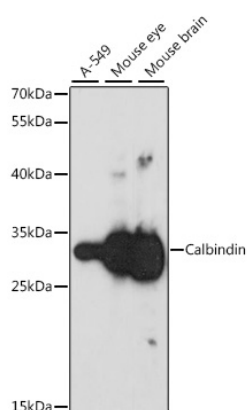
Affinity purification

### Storage

Store at -20°C. Avoid freeze / thaw cycles.

Buffer: PBS with 0.01% thimerosal, 50% glycerol, pH7.3.

## Validation Data



Western blot analysis of various lysates using Calbindin Rabbit pAb (A0802) at 1:1000 dilution.

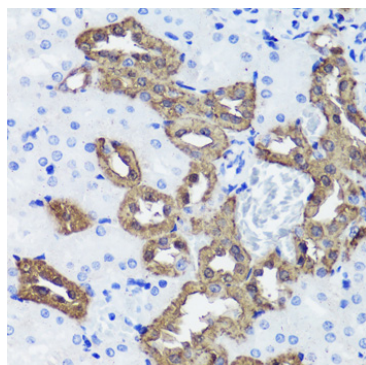
Secondary antibody: HRP Goat Anti-Rabbit IgG (H+L) (AS014) at 1:10000 dilution.

Lysates/proteins: 25µg per lane.

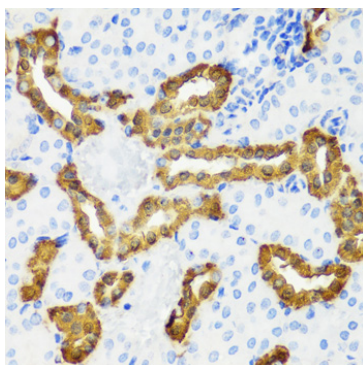
Blocking buffer: 3% nonfat dry milk in TBST.

Detection: ECL Basic Kit (RM00020).

Exposure time: 30s.



Immunohistochemistry analysis of paraffin-embedded rat kidney using Calbindin Rabbit pAb (A0802) at dilution of 1:100 (40x lens). Perform microwave antigen retrieval with 10 mM PBS buffer pH 7.2 before commencing with IHC staining protocol.



Immunohistochemistry analysis of paraffin-embedded mouse kidney using Calbindin Rabbit pAb (A0802) at dilution of 1:100 (40x lens). Perform microwave antigen retrieval with 10 mM PBS buffer pH 7.2 before commencing with IHC staining protocol.