

A0781

Leader in Biomolecular Solutions for Life Science



Erlin-2 Rabbit mAb

Catalog No.: A0781

Recombinant

Basic Information

Observed MW

43kDa

Calculated MW

38kDa

Category

SMab Recombinant Monoclonal
Antibody

Applications

WB,IHC-P,ELISA

Cross-Reactivity

Human,Mouse,Rat

CloneNo number

ARC2538

Recommended Dilutions

WB	1:500 - 1:1000
IHC-P	1:50 - 1:200

Contact



www.abclonal.com

Background

This gene encodes a member of the SPFH domain-containing family of lipid raft-associated proteins. The encoded protein is localized to lipid rafts of the endoplasmic reticulum and plays a critical role in inositol 1,4,5-trisphosphate (IP3) signaling by mediating ER-associated degradation of activated IP3 receptors. Mutations in this gene are a cause of spastic paraplegia-18 (SPG18). Alternatively spliced transcript variants encoding multiple isoforms have been observed for this gene.

Immunogen Information

Gene ID	Swiss Prot
11160	O94905

Immunogen

A synthetic peptide corresponding to a sequence within amino acids 50-150 of human Erlin-2 (O94905).

Synonyms

NET32; SPFH2; SPG18; C8orf2; Erlin-2

Product Information

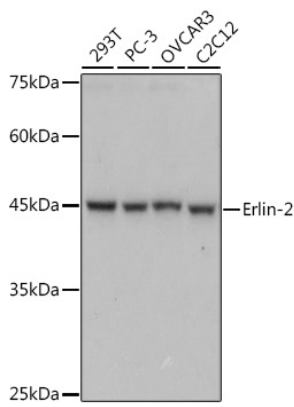
Source	Isotype	Purification
Rabbit	IgG	Affinity purification

Storage

Store at -20°C. Avoid freeze / thaw cycles.

Buffer: PBS with 0.02% sodium azide,0.05% BSA,50% glycerol,pH7.3.

Validation Data



Western blot analysis of various lysates using Erlin-2 Rabbit mAb (A0781) at 1:1000 dilution.

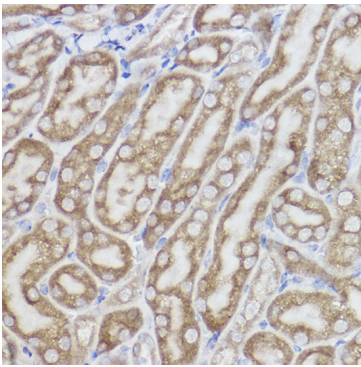
Secondary antibody: HRP Goat Anti-Rabbit IgG (H+L) (AS014) at 1:10000 dilution.

Lysates/proteins: 25µg per lane.

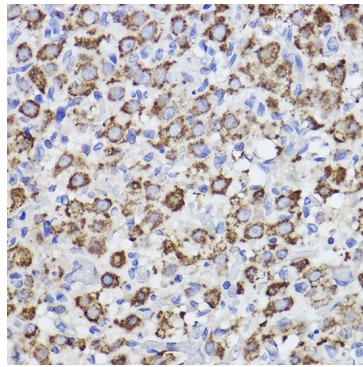
Blocking buffer: 3% nonfat dry milk in TBST.

Detection: ECL Basic Kit (RM00020).

Exposure time: 1s.



Immunohistochemistry analysis of paraffin-embedded mouse kidney using Erlin-2 Rabbit mAb (A0781) at dilution of 1:100 (40x lens). Perform high pressure antigen retrieval with 10 mM citrate buffer pH 6.0 before commencing with IHC staining protocol.



Immunohistochemistry analysis of paraffin-embedded rat ovary using Erlin-2 Rabbit mAb (A0781) at dilution of 1:100 (40x lens). Perform high pressure antigen retrieval with 10 mM citrate buffer pH 6.0 before commencing with IHC staining protocol.