

A0773

Leader in Biomolecular Solutions for Life Science



# CTR1/SLC31A1 Rabbit mAb

Catalog No.: A0773

Recombinant

3 Publications

## Basic Information

### Observed MW

32kDa

### Calculated MW

21kDa

### Category

SMab Recombinant Monoclonal  
Antibody

### Applications

WB,ELISA

### Cross-Reactivity

Human,Mouse,Rat

### CloneNo number

ARC2537

## Background

The protein encoded by this gene is a high-affinity copper transporter found in the cell membrane. The encoded protein functions as a homotrimer to effect the uptake of dietary copper.

## Recommended Dilutions

**WB** 1:1000 - 1:6000

**ELISA** Recommended starting concentration is 1 µg/mL. Please optimize the concentration based on your specific assay requirements.

## Immunogen Information

### Gene ID

1317

### Swiss Prot

O15431

### Immunogen

A synthetic peptide corresponding to a sequence within amino acids 1-100 of human CTR1/SLC31A1 (NP\_001850.1).

### Synonyms

CTR1; NSCT; COPT1; CTR1/SLC31A1

## Contact



[www.abclonal.com](http://www.abclonal.com)

## Product Information

### Source

Rabbit

### Isotype

IgG

### Purification

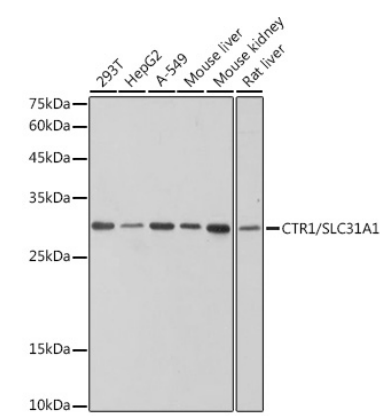
Affinity purification

### Storage

Store at -20°C. Avoid freeze / thaw cycles.

Buffer: PBS with 0.02% sodium azide,0.05% BSA,50% glycerol,pH7.3.

# Validation Data



Western blot analysis of various lysates using CTR1/SLC31A1 Rabbit mAb (A0773) at 1:1000 dilution.  
Secondary antibody: HRP-conjugated Goat anti-Rabbit IgG (H+L) (AS014) at 1:10000 dilution.  
Lysates/proteins: 25µg per lane.  
Blocking buffer: 3% nonfat dry milk in TBST.  
Detection: ECL Basic Kit (RM00020).  
Exposure time: 1s.