

A0722

Leader in Biomolecular Solutions for Life Science



## BMP7 Rabbit pAb

Catalog No.: A0722

### Basic Information

#### Observed MW

49kDa

#### Calculated MW

49kDa

#### Category

Polyclonal Antibody

#### Applications

WB,IF/ICC

#### Cross-Reactivity

Human

### Background

This gene encodes a secreted ligand of the TGF-beta (transforming growth factor-beta) superfamily of proteins. Ligands of this family bind various TGF-beta receptors leading to recruitment and activation of SMAD family transcription factors that regulate gene expression. The encoded preproprotein is proteolytically processed to generate each subunit of the disulfide-linked homodimer, which plays a role in bone, kidney and brown adipose tissue development. Additionally, this protein induces ectopic bone formation and may promote fracture healing in human patients.

### Recommended Dilutions

WB 1:500 - 1:1000

IF/ICC 1:20 - 1:50

### Immunogen Information

#### Gene ID

655

#### Swiss Prot

P18075

#### Immunogen

A synthetic peptide of human BMP7

#### Synonyms

OP-1; BMP7

### Contact



[www.abclonal.com](http://www.abclonal.com)

### Product Information

#### Source

Rabbit

#### Isotype

IgG

#### Purification

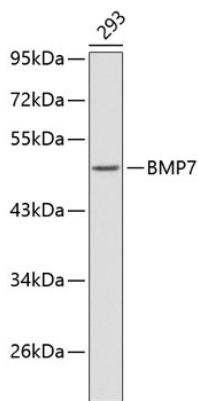
Affinity purification

#### Storage

Store at 4°C. Avoid freeze / thaw cycles.

Buffer: PBS with 0.02% sodium azide, pH7.3.

Validation Data



Western blot analysis of extracts of 293 cells, using BMP7 antibody (A0722).  
Secondary antibody: HRP Goat Anti-Rabbit IgG (H+L) (AS014) at 1:10000 dilution.  
Lysates/proteins: 25µg per lane.  
Blocking buffer: 3% nonfat dry milk in TBST.