

A0545

Leader in Biomolecular Solutions for Life Science



Glycophorin A (CD235a) Rabbit mAb

Catalog No.: A0545

Recombinant

Basic Information

Observed MW

Calculated MW

16kDa

Category

Monoclonal Antibody

Applications

IHC-P,IF/ICC

Cross-Reactivity

Background

Glycophorins A (GYPA) and B (GYPB) are major sialoglycoproteins of the human erythrocyte membrane which bear the antigenic determinants for the MN and Ss blood groups. In addition to the M or N and S or s antigens that commonly occur in all populations, about 40 related variant phenotypes have been identified. These variants include all the variants of the Miltenberger complex and several isoforms of Sta, as well as Dantu, Sat, He, Mg, and deletion variants Ena, S-s-U- and Mk. Most of the variants are the result of gene recombinations between GYPA and GYPB.

Recommended Dilutions

IHC-P 1:50 - 1:200

IF/ICC 1:50 - 1:200

Immunogen Information

Gene ID

2993

Swiss Prot

P02724

Immunogen

A synthesized peptide derived from human Glycophorin A (CD235a)

Synonyms

MN; GPA; MNS; GPSAT; PAS-2; CD235a; GP_Erik; HGpMiV; HGpMiXI; HGpSta(C); Glycophorin A (CD235a)

Contact



www.abclonal.com

Product Information

Source

Rabbit

Isotype

IgG

Purification

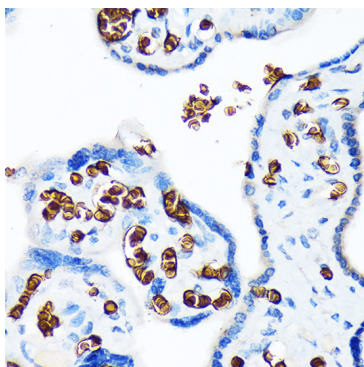
Affinity purification

Storage

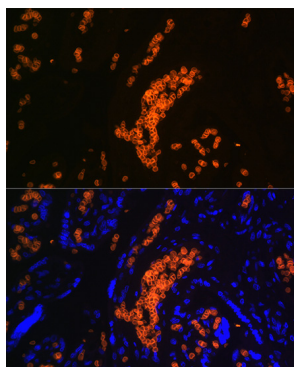
Store at -20°C. Avoid freeze / thaw cycles.

Buffer: PBS with 0.02% sodium azide, 0.05% BSA, 50% glycerol, pH 7.3.

Validation Data



Immunohistochemistry of paraffin-embedded human placenta using Glycophorin A (CD235a) Rabbit mAb (A0545) at dilution of 1:100 (40x lens).



Immunofluorescence analysis of human placenta using Glycophorin A (CD235a) Rabbit mAb (A0545) at dilution of 1:100 (40x lens). Blue: DAPI for nuclear staining.