

A0511

Leader in Biomolecular Solutions for Life Science



## CRKL Rabbit pAb

Catalog No.: A0511

1 Publications

### Basic Information

#### Observed MW

34kDa

#### Calculated MW

34kDa

#### Category

Polyclonal Antibody

#### Applications

WB,ELISA

#### Cross-Reactivity

Human,Mouse

### Background

This gene encodes a protein kinase containing SH2 and SH3 (src homology) domains which has been shown to activate the RAS and JUN kinase signaling pathways and transform fibroblasts in a RAS-dependent fashion. It is a substrate of the BCR-ABL tyrosine kinase, plays a role in fibroblast transformation by BCR-ABL, and may be oncogenic.

### Recommended Dilutions

WB 1:500 - 1:2000

### Immunogen Information

#### Gene ID

1399

#### Swiss Prot

P46109

#### Immunogen

A synthetic peptide corresponding to a sequence within amino acids 201-300 of human CRKL (NP\_005198.1).

#### Synonyms

CRKL

### Contact



[www.abclonal.com](http://www.abclonal.com)

### Product Information

#### Source

Rabbit

#### Isotype

IgG

#### Purification

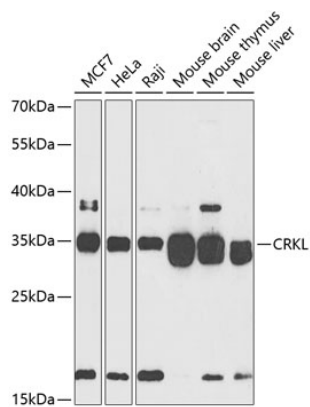
Affinity purification

#### Storage

Store at -20°C. Avoid freeze / thaw cycles.

Buffer: PBS with 0.02% sodium azide, 50% glycerol, pH 7.3.

## Validation Data



Western blot analysis of extracts of various cell lines, using CRKL antibody (A0511) at 1:500 dilution.

Secondary antibody: HRP Goat Anti-Rabbit IgG (H+L) (AS014) at 1:10000 dilution.

Lysates/proteins: 25µg per lane.

Blocking buffer: 3% nonfat dry milk in TBST.

Detection: ECL Basic Kit (RM00020).

Exposure time: 90s.