

A0485

Leader in Biomolecular Solutions for Life Science



# NPM1 Rabbit pAb

Catalog No.: A0485

## Basic Information

---

### Observed MW

39kDa

### Calculated MW

33kDa

### Category

Polyclonal Antibody

### Applications

WB,IF/ICC,FC

### Cross-Reactivity

Human,Mouse

## Background

---

The protein encoded by this gene is involved in several cellular processes, including centrosome duplication, protein chaperoning, and cell proliferation. The encoded phosphoprotein shuttles between the nucleolus, nucleus, and cytoplasm, chaperoning ribosomal proteins and core histones from the nucleus to the cytoplasm. This protein is also known to sequester the tumor suppressor ARF in the nucleolus, protecting it from degradation until it is needed. Mutations in this gene are associated with acute myeloid leukemia. Dozens of pseudogenes of this gene have been identified.

## Recommended Dilutions

---

<b>WB</b>	1:500 - 1:2000
<b>IF/ICC</b>	1:20 - 1:50
<b>FC</b>	1:20 - 1:50

## Immunogen Information

---

### Gene ID

4869

### Swiss Prot

P06748

### Immunogen

Synthetic peptide. This information is considered to be commercially sensitive.

### Synonyms

B23; NPM; NPM1

## Contact

---

 [www.abclonal.com](http://www.abclonal.com)

## Product Information

---

### Source

Rabbit

### Isotype

IgG

### Purification

Affinity purification

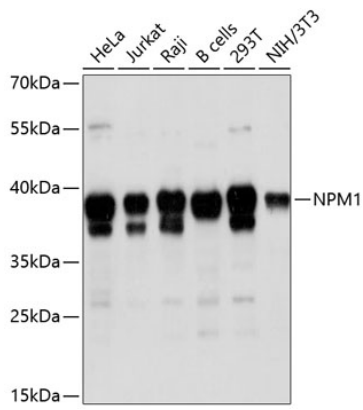
### Storage

Store at 4°C. Avoid freeze / thaw cycles.

Buffer: PBS with 0.02% sodium azide,pH7.3.

## Validation Data

---



Western blot analysis of various lysates using NPM1 Rabbit pAb (A0485) at 1:1000 dilution.

Secondary antibody: HRP-conjugated Goat anti-Rabbit IgG (H+L) (AS014) at 1:10000 dilution.

Lysates/proteins: 25µg per lane.

Blocking buffer: 3% nonfat dry milk in TBST.

Detection: ECL Basic Kit (RM00020).

Exposure time: 30s.