

A0452

Leader in Biomolecular Solutions for Life Science



# MRPL28 Rabbit mAb

Catalog No.: A0452 **Recombinant**

## Basic Information

### Observed MW

30kDa/30kd

### Calculated MW

30kDa

### Category

Monoclonal Antibody

### Applications

WB,IP,ELISA

### Cross-Reactivity

Human,Mouse,Rat

### CloneNo number

ARC2507

## Recommended Dilutions

**WB** 1:500 - 1:1000

**IP** 0.5µg-4µg antibody for  
200µg-400µg extracts  
of whole cells

**ELISA** Recommended starting  
concentration is 1  
µg/mL. Please optimize  
the concentration  
based on your specific  
assay requirements.

## Contact

 [www.abclonal.com](http://www.abclonal.com)

## Background

Mammalian mitochondrial ribosomal proteins are encoded by nuclear genes and help in protein synthesis within the mitochondrion. Mitochondrial ribosomes (mitoribosomes) consist of a small 28S subunit and a large 39S subunit. They have an estimated 75% protein to rRNA composition compared to prokaryotic ribosomes, where this ratio is reversed. Another difference between mammalian mitoribosomes and prokaryotic ribosomes is that the latter contain a 5S rRNA. Among different species, the proteins comprising the mitoribosome differ greatly in sequence, and sometimes in biochemical properties, which prevents easy recognition by sequence homology. This gene encodes a 39S subunit protein, a part of which was originally isolated by its ability to recognize tyrosinase in an HLA-A24-restricted fashion.

## Immunogen Information

Gene ID	Swiss Prot
10573	Q13084

### Immunogen

Synthetic peptide. This information is considered to be commercially sensitive.

### Synonyms

p15; MAAT1; MRPL28

## Product Information

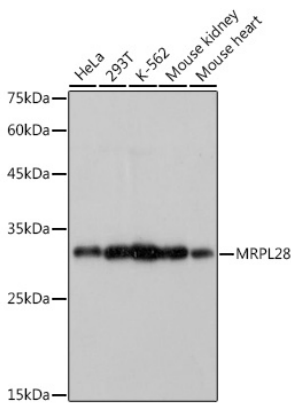
Source	Isotype	Purification
Rabbit	IgG	Affinity purification

### Storage

Store at -20°C. Avoid freeze / thaw cycles.

Buffer: PBS containing 50% glycerol and 0.05% BSA, preserved with proclin300 or sodium azide (as specified on the Certificate of Analysis), pH 7.3.

## Validation Data



Western blot analysis of various lysates using MRPL28 Rabbit mAb (A0452) at 1:1000 dilution.

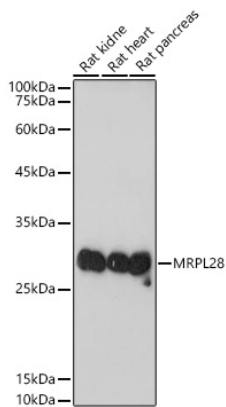
Secondary antibody: HRP-conjugated Goat anti-Rabbit IgG (H+L) (AS014) at 1:10000 dilution.

Lysates/proteins: 25µg per lane.

Blocking buffer: 3% nonfat dry milk in TBST.

Detection: ECL Basic Kit (RM00020).

Exposure time: 1s.



Western blot analysis of various lysates using MRPL28 Rabbit mAb (A0452) at 1:1000 dilution.

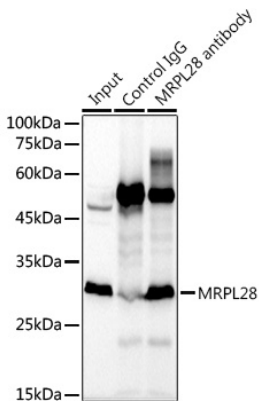
Secondary antibody: HRP-conjugated Goat anti-Rabbit IgG (H+L) (AS014) at 1:10000 dilution.

Lysates/proteins: 25µg per lane.

Blocking buffer: 3% nonfat dry milk in TBST.

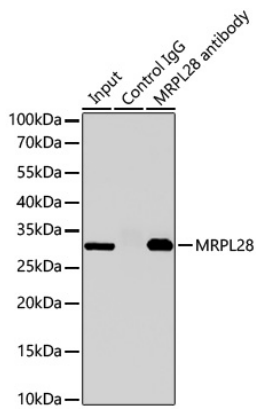
Detection: ECL Basic Kit (RM00020).

Exposure time: 10s.



Immunoprecipitation analysis of 300 µg extracts of K-562 cells using 3 µg MRPL28 antibody (A0452). Western blot was performed from the immunoprecipitate using MRPL28 antibody (A0452) at a dilution of 1:1000.

## Validation Data



Immunoprecipitation of MRPL28 from 300  $\mu\text{g}$  extracts of K-562 cells was performed using 2  $\mu\text{g}$  of MRPL28 Rabbit mAb (A0452). Rabbit IgG isotype control (AC005) was used to precipitate the Control IgG sample. IP samples were eluted with 1X reducing Laemmli Buffer. The Input lane represents 10% of the total input. Western blot analysis of immunoprecipitates was conducted using MRPL28 Rabbit mAb (A0452) at a dilution of 1:2000.