

A0438

Leader in Biomolecular Solutions for Life Science



CARS Rabbit mAb

Catalog No.: A0438

Recombinant

Basic Information

Observed MW

85kDa

Calculated MW

85kDa

Category

SMab Recombinant Monoclonal
Antibody

Applications

WB,IHC-P,ELISA

Cross-Reactivity

Human,Rat

CloneNo number

ARC2504

Background

This gene encodes a class 1 aminoacyl-tRNA synthetase, cysteinyl-tRNA synthetase. Each of the twenty aminoacyl-tRNA synthetases catalyzes the aminoacylation of a specific tRNA or tRNA isoaccepting family with the cognate amino acid. This gene is one of several located near the imprinted gene domain on chromosome 11p15.5, an important tumor-suppressor gene region. Alterations in this region have been associated with Beckwith-Wiedemann syndrome, Wilms tumor, rhabdomyosarcoma, adrenocortical carcinoma, and lung, ovarian and breast cancers. Alternative splicing of this gene results in multiple transcript variants.

Recommended Dilutions

WB 1:1000 - 1:5000

IHC-P 1:50 - 1:200

Immunogen Information

Gene ID

833

Swiss Prot

P49589

Immunogen

Recombinant fusion protein containing a sequence corresponding to amino acids 650-748 of human CARS (P49589).

Synonyms

CARS; MDBH; CYSRS; MCDDBH; MGC:11246

Contact



www.abclonal.com

Product Information

Source

Rabbit

Isotype

IgG

Purification

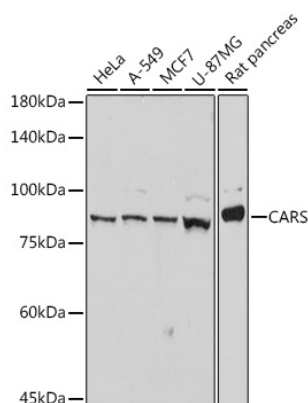
Affinity purification

Storage

Store at -20°C. Avoid freeze / thaw cycles.

Buffer: PBS with 0.02% sodium azide, 0.05% BSA, 50% glycerol, pH7.3.

Validation Data



Western blot analysis of various lysates using CARS Rabbit mAb (A0438) at 1:1000 dilution.

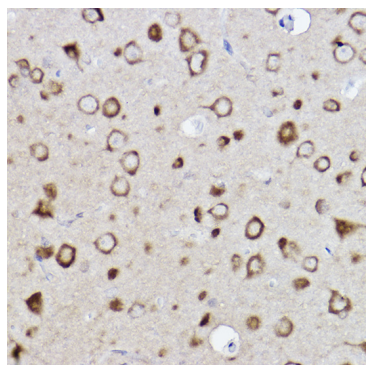
Secondary antibody: HRP Goat Anti-Rabbit IgG (H+L) (AS014) at 1:10000 dilution.

Lysates/proteins: 25µg per lane.

Blocking buffer: 3% nonfat dry milk in TBST.

Detection: ECL Basic Kit (RM00020).

Exposure time: 3s.



Immunohistochemistry analysis of paraffin-embedded rat brain using CARS Rabbit mAb (A0438) at dilution of 1:100 (40x lens). Perform high pressure antigen retrieval with 10 mM citrate buffer pH 6.0 before commencing with IHC staining protocol.