

A0429

Leader in Biomolecular Solutions for Life Science



PPIG Rabbit pAb

Catalog No.: A0429

Basic Information

Observed MW

110kDa

Calculated MW

89kDa

Category

Polyclonal Antibody

Applications

WB,ELISA

Cross-Reactivity

Human

Background

Enables cyclosporin A binding activity and peptidyl-prolyl cis-trans isomerase activity. Involved in protein peptidyl-prolyl isomerization. Located in cytosol and nuclear speck.

Recommended Dilutions

WB 1:500 - 1:2000

ELISA Recommended starting concentration is 1 µg/mL. Please optimize the concentration based on your specific assay requirements.

Immunogen Information

Gene ID

9360

Swiss Prot

Q13427

Immunogen

Synthetic peptide. This information is considered to be commercially sensitive.

Synonyms

CYP; SRCyp; SCAF10; CARS-Cyp; PPIG

Contact



www.abclonal.com

Product Information

Source

Rabbit

Isotype

IgG

Purification

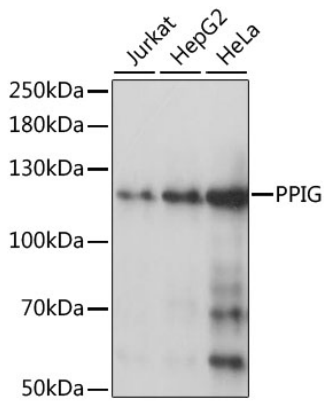
Affinity purification

Storage

Store at -20°C. Avoid freeze / thaw cycles.

Buffer: PBS with 0.01% thimerosal, 50% glycerol, pH7.3.

Validation Data



Western blot analysis of various lysates using PPIG Rabbit pAb (A0429) at 1:1000 dilution.

Secondary antibody: HRP-conjugated Goat anti-Rabbit IgG (H+L) (AS014) at 1:10000 dilution.

Lysates/proteins: 25µg per lane.

Blocking buffer: 3% nonfat dry milk in TBST.

Detection: ECL Basic Kit (RM00020).

Exposure time: 3s.