

A0299

Leader in Biomolecular Solutions for Life Science



# CRM1/XPO1 Rabbit pAb

Catalog No.: A0299

2 Publications

## Basic Information

### Observed MW

123kDa

### Calculated MW

123kDa

### Category

Polyclonal Antibody

### Applications

WB, ELISA

### Cross-Reactivity

Human, Mouse

## Background

This cell-cycle-regulated gene encodes a protein that mediates leucine-rich nuclear export signal (NES)-dependent protein transport. The protein specifically inhibits the nuclear export of Rev and U snRNAs. It is involved in the control of several cellular processes by controlling the localization of cyclin B, MPAK, and MAPKAP kinase 2. This protein also regulates NFAT and AP-1.

## Recommended Dilutions

**WB** 1:500 - 1:1000

**ELISA** Recommended starting concentration is 1 µg/mL. Please optimize the concentration based on your specific assay requirements.

## Immunogen Information

### Gene ID

7514

### Swiss Prot

O14980

### Immunogen

A synthetic peptide corresponding to a sequence within amino acids 964-1064 of human CRM1/CRM1/XPO1 (NP\_003391.1).

### Synonyms

emb; CRM1; exp1; CRM-1; CRM1/XPO1

## Contact



[www.abclonal.com](http://www.abclonal.com)

## Product Information

### Source

Rabbit

### Isotype

IgG

### Purification

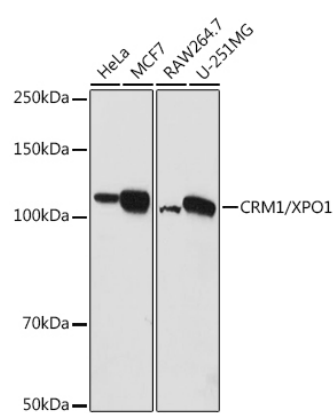
Affinity purification

### Storage

Store at -20°C. Avoid freeze / thaw cycles.

Buffer: PBS with 0.05% proclin300, 50% glycerol, pH7.3.

# Validation Data



Western blot analysis of various lysates using CRM1/XPO1 Rabbit pAb (A0299) at 1:1000 dilution.  
Secondary antibody: HRP-conjugated Goat anti-Rabbit IgG (H+L) (AS014) at 1:10000 dilution.  
Lysates/proteins: 25µg per lane.  
Blocking buffer: 3% nonfat dry milk in TBST.  
Detection: ECL Basic Kit (RM00020).  
Exposure time: 180s.