

A0290

Leader in Biomolecular Solutions for Life Science



CDKN1B/p27KIP1 Rabbit pAb

Catalog No.: A0290

10 Publications

Basic Information

Observed MW

27kDa

Calculated MW

22kDa

Category

Polyclonal Antibody

Applications

WB,IHC-P,IF/ICC,ELISA

Cross-Reactivity

Human,Mouse,Rat

Background

This gene encodes a cyclin-dependent kinase inhibitor, which shares a limited similarity with CDK inhibitor CDKN1A/p21. The encoded protein binds to and prevents the activation of cyclin E-CDK2 or cyclin D-CDK4 complexes, and thus controls the cell cycle progression at G1. The degradation of this protein, which is triggered by its CDK dependent phosphorylation and subsequent ubiquitination by SCF complexes, is required for the cellular transition from quiescence to the proliferative state. Mutations in this gene are associated with multiple endocrine neoplasia type IV (MEN4).

Recommended Dilutions

WB 1:500 - 1:5000

IF/ICC 1:50 - 1:100

IHC-P 1:50 - 1:200

ELISA Recommended starting concentration is 1 µg/mL. Please optimize the concentration based on your specific assay requirements.

Immunogen Information

Gene ID

1027

Swiss Prot

P46527

Immunogen

Recombinant protein (or fragment). This information is considered to be commercially sensitive.

Synonyms

KIP1; MEN4; CDKN4; MEN1B; P27KIP1; CDKN1B/p27KIP1

Product Information

Source

Rabbit

Isotype

IgG

Purification

Affinity purification

Storage

Store at -20°C. Avoid freeze / thaw cycles.

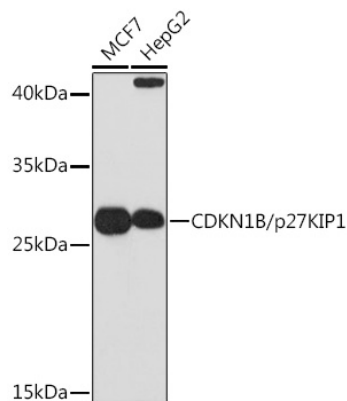
Buffer: PBS with 0.09% Sodium azide, 50% glycerol, pH7.3.

Contact



www.abclonal.com

Validation Data



Western blot analysis of various lysates using CDKN1B/p27KIP1 Rabbit pAb (A0290) at 1:1000 dilution.

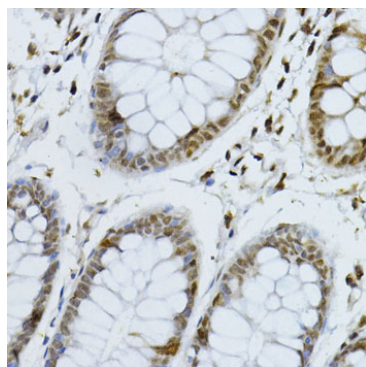
Secondary antibody: HRP-conjugated Goat anti-Rabbit IgG (H+L) (AS014) at 1:10000 dilution.

Lysates/proteins: 25µg per lane.

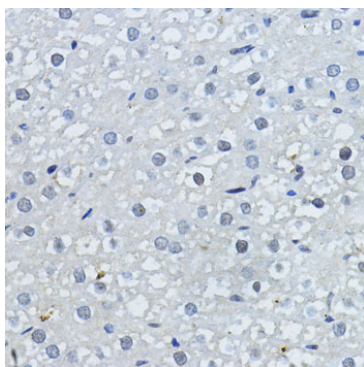
Blocking buffer: 3% nonfat dry milk in TBST.

Detection: ECL Basic Kit (RM00020).

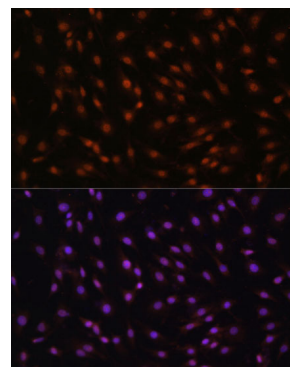
Exposure time: 3min.



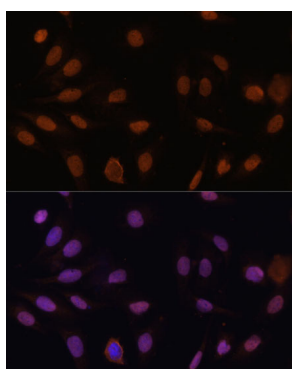
Immunohistochemistry analysis of paraffin-embedded Human colon using CDKN1B/p27KIP1 Rabbit pAb (A0290) at dilution of 1:200 (40x lens). Microwave antigen retrieval performed with 0.01M PBS Buffer (pH 7.2) prior to IHC staining.



Immunohistochemistry analysis of paraffin-embedded Rat liver using CDKN1B/p27KIP1 Rabbit pAb (A0290) at dilution of 1:200 (40x lens). Microwave antigen retrieval performed with 0.01M PBS Buffer (pH 7.2) prior to IHC staining.



Immunofluorescence analysis of C6 cells using CDKN1B/p27KIP1 Rabbit pAb (A0290) at dilution of 1:100 (40x lens). Secondary antibody: Cy3-conjugated Goat anti-Rabbit IgG (H+L) (AS007) at 1:500 dilution. Blue: DAPI for nuclear staining.



Immunofluorescence analysis of U-2 OS cells using CDKN1B/p27KIP1 Rabbit pAb (A0290) at dilution of 1:100 (40x lens). Secondary antibody: Cy3-conjugated Goat anti-Rabbit IgG (H+L) (AS007) at 1:500 dilution. Blue: DAPI for nuclear staining.