

A0208

Leader in Biomolecular Solutions for Life Science



## Bcl-2 Rabbit pAb

Catalog No.: A0208

405 Publications

### Basic Information

#### Observed MW

26kDa/

#### Calculated MW

26kDa

#### Category

Polyclonal Antibody

#### Applications

WB,IHC-P,IF/ICC,IP,ELISA

#### Cross-Reactivity

Human,Mouse,Rat

### Background

This gene encodes an integral outer mitochondrial membrane protein that blocks the apoptotic death of some cells such as lymphocytes. Constitutive expression of BCL2, such as in the case of translocation of BCL2 to Ig heavy chain locus, is thought to be the cause of follicular lymphoma. Alternative splicing results in multiple transcript variants.

### Recommended Dilutions

**WB** 1:500 - 1:1000

**IHC-P** 1:50 - 1:200

**IF/ICC** 1:50 - 1:200

**IP** 0.5µg-4µg antibody for  
200µg-400µg extracts  
of whole cells

**ELISA** Recommended starting  
concentration is 1  
µg/mL. Please optimize  
the concentration  
based on your specific  
assay requirements.

### Immunogen Information

#### Gene ID

596

#### Swiss Prot

P10415

#### Immunogen

Synthetic peptide. This information is considered to be commercially sensitive.

#### Synonyms

Bcl-2; PPP1R50

### Product Information

#### Source

Rabbit

#### Isotype

IgG

#### Purification

Affinity purification

#### Storage

Store at -20°C. Avoid freeze / thaw cycles.

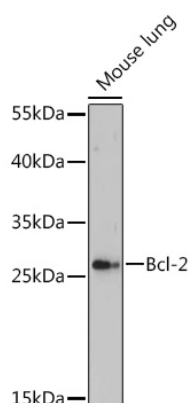
Buffer: PBS with 0.09% Sodium azide,50% glycerol,pH7.3.

### Contact

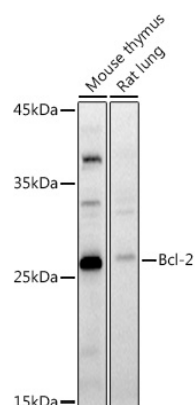


[www.abclonal.com](http://www.abclonal.com)

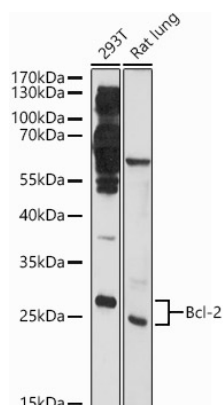
## Validation Data



Western blot analysis of lysates from Mouse lung, using Bcl-2 Rabbit pAb (A0208) at 1:500 dilution.  
Secondary antibody: HRP-conjugated Goat anti-Rabbit IgG (H+L) (AS014) at 1:10000 dilution.  
Lysates/proteins: 25µg per lane.  
Blocking buffer: 3% nonfat dry milk in TBST.  
Detection: ECL Enhanced Kit (RM00021).  
Exposure time: 5s.

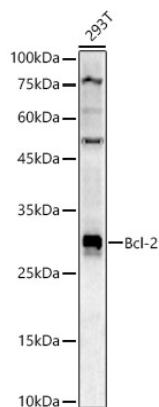


Western blot analysis of various lysates using Bcl-2 Rabbit pAb (A0208) at 1:1000 dilution.  
Secondary antibody: HRP-conjugated Goat anti-Rabbit IgG (H+L) (AS014) at 1:10000 dilution.  
Lysates/proteins: 25µg per lane.  
Blocking buffer: 3% nonfat dry milk in TBST.  
Detection: ECL Basic Kit (RM00020).  
Exposure time: 180s.

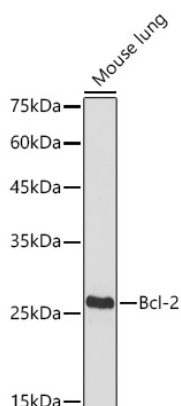


Western blot analysis of various lysates using Bcl-2 Rabbit pAb (A0208) at 1:1000 dilution.  
Secondary antibody: HRP-conjugated Goat anti-Rabbit IgG (H+L) (AS014) at 1:10000 dilution.  
Lysates/proteins: 25µg per lane.  
Blocking buffer: 3% nonfat dry milk in TBST.  
Detection: ECL Basic Kit (RM00020).  
Exposure time: 60s.

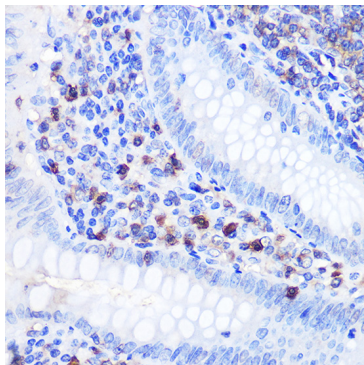
## Validation Data



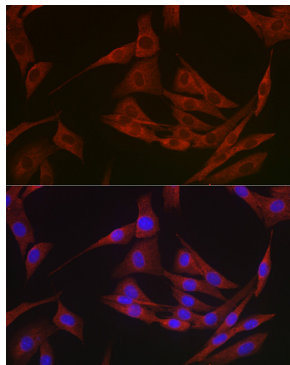
Western blot analysis of lysates from 293T cells, using Bcl-2 Rabbit pAb (A0208) at 1:900 dilution.  
Secondary antibody: HRP-conjugated Goat anti-Rabbit IgG (H+L) (AS014) at 1:10000 dilution.  
Lysates/proteins: 25µg per lane.  
Blocking buffer: 3% nonfat dry milk in TBST.  
Detection: ECL Basic Kit (RM00020).  
Exposure time: 90s.



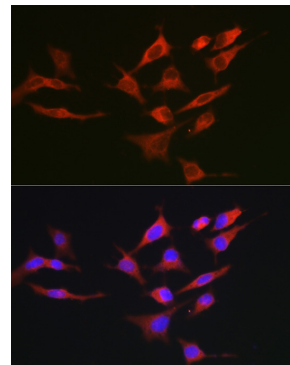
Western blot analysis of lysates from Mouse lung using Bcl-2 Rabbit pAb (A0208) at 1:1000 dilution incubated overnight at 4°C.  
Secondary antibody: HRP-conjugated Goat anti-Rabbit IgG (H+L) (AS014) at 1:10000 dilution.  
Lysates/proteins: 25 µg per lane.  
Blocking buffer: 3% nonfat dry milk in TBST.  
Detection: ECL Basic Kit (RM00020).  
Exposure time: 90s.



Immunohistochemistry analysis of paraffin-embedded Human appendix using Bcl-2 Rabbit pAb (A0208) at dilution of 1:100 (40x lens).  
Microwave antigen retrieval performed with 0.01M PBS Buffer (pH 7.2) prior to IHC staining.

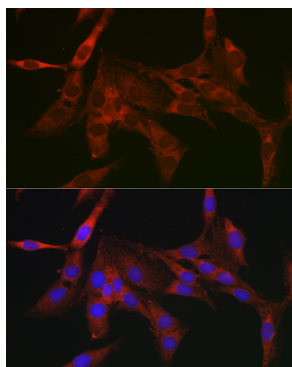


Immunofluorescence analysis of NIH/3T3 cells using Bcl-2 Rabbit pAb (A0208) at dilution of 1:250.  
Secondary antibody: Cy3-conjugated Goat anti-Rabbit IgG (H+L) (AS007) at 1:500 dilution. Blue: DAPI for nuclear staining.

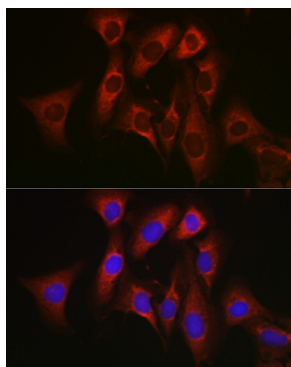


Immunofluorescence analysis of HeLa cells using Bcl-2 Rabbit pAb (A0208) at dilution of 1:250.  
Secondary antibody: Cy3-conjugated Goat anti-Rabbit IgG (H+L) (AS007) at 1:500 dilution. Blue: DAPI for nuclear staining.

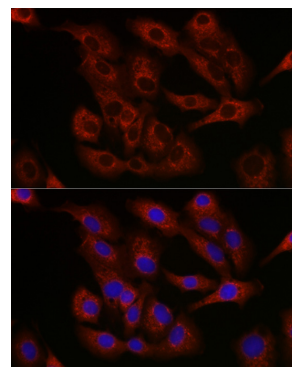
## Validation Data



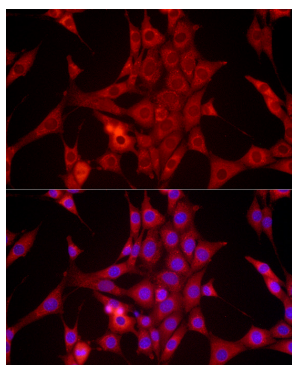
Immunofluorescence analysis of C6 cells using Bcl-2 Rabbit pAb (A0208) at dilution of 1:250. Secondary antibody: Cy3-conjugated Goat anti-Rabbit IgG (H+L) (AS007) at 1:500 dilution. Blue: DAPI for nuclear staining.



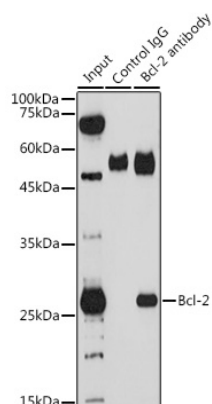
Immunofluorescence analysis of U2OS cells using Bcl-2 Rabbit pAb (A0208) at dilution of 1:250. Secondary antibody: Cy3-conjugated Goat anti-Rabbit IgG (H+L) (AS007) at 1:500 dilution. Blue: DAPI for nuclear staining.



Immunofluorescence analysis of A-549 cells using Bcl-2 Rabbit pAb (A0208) at dilution of 1:250. Secondary antibody: Cy3-conjugated Goat anti-Rabbit IgG (H+L) (AS007) at 1:500 dilution. Blue: DAPI for nuclear staining.



Immunofluorescence analysis of NIH/3T3 cells using Bcl-2 Rabbit pAb (A0208) at dilution of 1:100 (40x lens). Secondary antibody: Cy3-conjugated Goat anti-Rabbit IgG (H+L) (AS007) at 1:500 dilution. Blue: DAPI for nuclear staining.



Immunoprecipitation analysis of 200 µg extracts of THP-1 cells using 3 µg Bcl-2 antibody (A0208). Western blot was performed from the immunoprecipitate using Bcl-2 antibody (A0208) at a dilution of 1:1000.