

A0204

Leader in Biomolecular Solutions for Life Science



Bak Rabbit pAb

Catalog No.: A0204

17 Publications

Basic Information

Observed MW

25kDa

Calculated MW

23kDa

Category

Polyclonal Antibody

Applications

WB,IF/ICC,IP,ELISA

Cross-Reactivity

Human,Mouse,Rat

Background

The protein encoded by this gene belongs to the BCL2 protein family. BCL2 family members form oligomers or heterodimers and act as anti- or pro-apoptotic regulators that are involved in a wide variety of cellular activities. This protein localizes to mitochondria, and functions to induce apoptosis. It interacts with and accelerates the opening of the mitochondrial voltage-dependent anion channel, which leads to a loss in membrane potential and the release of cytochrome c. This protein also interacts with the tumor suppressor P53 after exposure to cell stress.

Recommended Dilutions

WB 1:500 - 1:1000

IF/ICC 1:50 - 1:200

IP 0.5µg-4µg antibody for
200µg-400µg extracts
of whole cells

ELISA Recommended starting
concentration is 1
µg/mL. Please optimize
the concentration
based on your specific
assay requirements.

Immunogen Information

Gene ID

578

Swiss Prot

Q16611

Immunogen

A synthetic peptide corresponding to a sequence within amino acids 50-150 of human Bak (NP_001179.1).

Synonyms

BAK; CDN1; BCL2L7; BAK-LIKE; Bak

Product Information

Source

Rabbit

Isotype

IgG

Purification

Affinity purification

Storage

Store at -20°C. Avoid freeze / thaw cycles.

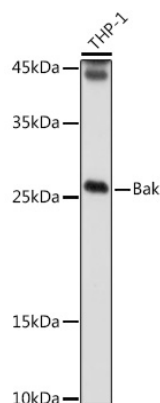
Buffer: PBS with 0.05% proclin300,50% glycerol,pH7.3.

Contact

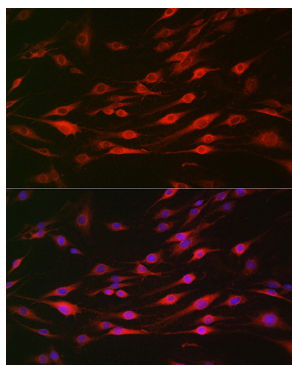


www.abclonal.com

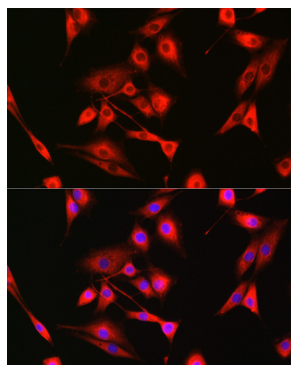
Validation Data



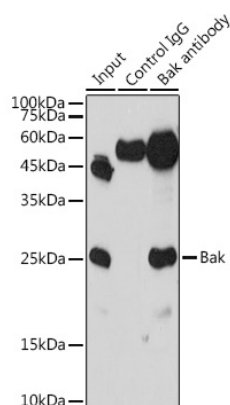
Western blot analysis of lysates from THP-1 cells, using Bak Rabbit pAb (A0204) at 1:1000 dilution.
Secondary antibody: HRP-conjugated Goat anti-Rabbit IgG (H+L) (AS014) at 1:10000 dilution.
Lysates/proteins: 25µg per lane.
Blocking buffer: 3% nonfat dry milk in TBST.
Detection: ECL Basic Kit (RM00020).
Exposure time: 180s.



Immunofluorescence analysis of C6 cells using Bak Rabbit pAb (A0204) at dilution of 1:100 (40x lens).
Secondary antibody: Cy3-conjugated Goat anti-Rabbit IgG (H+L) (AS007) at 1:500 dilution. Blue: DAPI for nuclear staining.



Immunofluorescence analysis of NIH/3T3 cells using Bak Rabbit pAb (A0204) at dilution of 1:100 (40x lens). Secondary antibody: Cy3-conjugated Goat anti-Rabbit IgG (H+L) (AS007) at 1:500 dilution. Blue: DAPI for nuclear staining.



Immunoprecipitation analysis of 300 µg extracts of THP-1 cells using 3 µg Bak antibody (A0204). Western blot was performed from the immunoprecipitate using Bak antibody (A0204) at a dilution of 1:1000.