

A0157

Leader in Biomolecular Solutions for Life Science



ALDH1A1 Rabbit mAb

Catalog No.: A0157

Recombinant

3 Publications

Basic Information

Observed MW

55kDa

Calculated MW

55kDa

Category

SMab Recombinant Monoclonal Antibody

Applications

WB,IF/ICC,IP,ELISA

Cross-Reactivity

Human,Mouse,Rat

CloneNo number

ARC52440

Background

The protein encoded by this gene belongs to the aldehyde dehydrogenase family. Aldehyde dehydrogenase is the next enzyme after alcohol dehydrogenase in the major pathway of alcohol metabolism. There are two major aldehyde dehydrogenase isozymes in the liver, cytosolic and mitochondrial, which are encoded by distinct genes, and can be distinguished by their electrophoretic mobility, kinetic properties, and subcellular localization. This gene encodes the cytosolic isozyme. Studies in mice show that through its role in retinol metabolism, this gene may also be involved in the regulation of the metabolic responses to high-fat diet.

Recommended Dilutions

WB 1:50000 - 1:200000

IF/ICC 1:100 - 1:800

IP 0.5µg-4µg antibody for 200µg-400µg extracts of whole cells

ELISA Recommended starting concentration is 1 µg/mL. Please optimize the concentration based on your specific assay requirements.

Immunogen Information

Gene ID

216

Swiss Prot

P00352

Immunogen

A synthetic peptide corresponding to a sequence within amino acids 250-350 of human ALDH1A1 (NP_000680.2).

Synonyms

ALDC; ALDH1; HEL-9; HEL12; PUMB1; ALDH11; RALDH1; ALDH-E1; HEL-S-53e; ALDH1A1

Product Information

Source

Rabbit

Isotype

IgG

Purification

Affinity purification

Storage

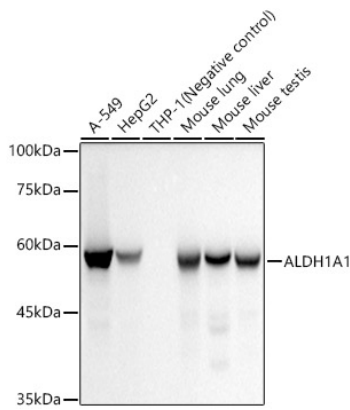
Store at -20°C. Avoid freeze / thaw cycles.

Buffer: PBS with 0.09% Sodium azide,0.05% BSA,50% glycerol,pH7.3.

Contact

 www.abclonal.com

Validation Data



Western blot analysis of various lysates, using ALDH1A1 Rabbit mAb (A0157) at 1:20000 dilution.

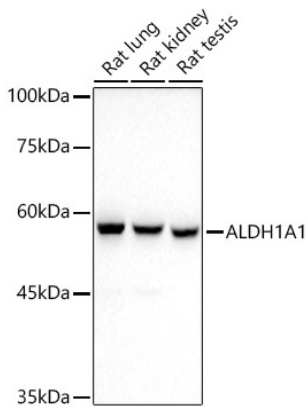
Secondary antibody: HRP-conjugated Goat anti-Rabbit IgG (H+L) (AS014) at 1:10000 dilution.

Lysates/proteins: 25µg per lane.

Blocking buffer: 3% nonfat dry milk in TBST.

Detection: ECL Basic Kit (RM00020).

Exposure time: 10s.



Western blot analysis of various lysates, using ALDH1A1 Rabbit mAb (A0157) at 1:20000 dilution.

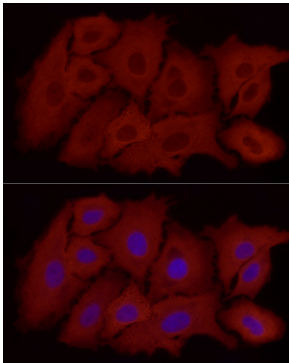
Secondary antibody: HRP-conjugated Goat anti-Rabbit IgG (H+L) (AS014) at 1:10000 dilution.

Lysates/proteins: 25µg per lane.

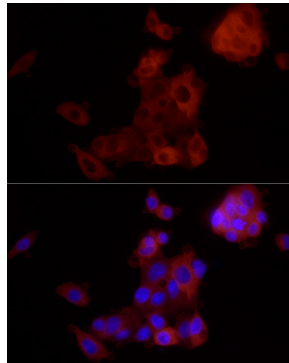
Blocking buffer: 3% nonfat dry milk in TBST.

Detection: ECL Basic Kit (RM00020).

Exposure time: 90s.

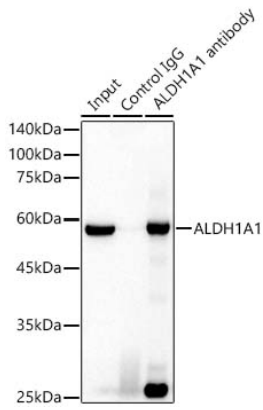


Immunofluorescence analysis of A549 using ALDH1A1 Rabbit mAb (A0157) at dilution of 1:100 (40x lens). Blue: DAPI for nuclear staining.



Immunofluorescence analysis of Hep G2 using ALDH1A1 Rabbit mAb (A0157) at dilution of 1:100 (40x lens). Blue: DAPI for nuclear staining.

Validation Data



Immunoprecipitation analysis of 300 μ g extracts of A-549 cells using 3 μ g ALDH1A1 Rabbit mAb antibody (A0157). Western blot was performed from the immunoprecipitate using ALDH1A1 Rabbit mAb (A0157) at a dilution of 1:20000.