

A0148

Leader in Biomolecular Solutions for Life Science



PGP9.5/UCHL1 Rabbit pAb

Catalog No.: A0148 **1 Publications**

Basic Information

Observed MW

25kDa

Calculated MW

25kDa

Category

Polyclonal Antibody

Applications

WB,ELISA

Cross-Reactivity

Human,Mouse

Background

The protein encoded by this gene belongs to the peptidase C12 family. This enzyme is a thiol protease that hydrolyzes a peptide bond at the C-terminal glycine of ubiquitin. This gene is specifically expressed in the neurons and in cells of the diffuse neuroendocrine system. Mutations in this gene may be associated with Parkinson disease.

Recommended Dilutions

WB 1:500 - 1:2000

ELISA Recommended starting concentration is 1 µg/mL. Please optimize the concentration based on your specific assay requirements.

Immunogen Information

Gene ID

7345

Swiss Prot

P09936

Immunogen

Recombinant protein (or fragment). This information is considered to be commercially sensitive.

Synonyms

NDGOA; PARK5; PGP95; SPG79; PGP9.5; SPG79A; UCHL-1; Uch-L1; HEL-117; PGP 9.5; HEL-S-53; PGP9.5/UCHL1

Contact

 www.abclonal.com

Product Information

Source

Rabbit

Isotype

IgG

Purification

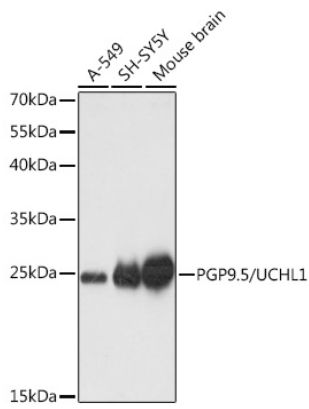
Affinity purification

Storage

Store at -20°C. Avoid freeze / thaw cycles.

Buffer: PBS containing 50% glycerol, preserved with proclin300 or sodium azide (as specified on the Certificate of Analysis), pH 7.3.

Validation Data



Western blot analysis of various lysates using PGP9.5/UCHL1 Rabbit pAb (A0148) at 1:1000 dilution.

Secondary antibody: HRP-conjugated Goat anti-Rabbit IgG (H+L) (AS014) at 1:10000 dilution.

Lysates/proteins: 25µg per lane.

Blocking buffer: 3% nonfat dry milk in TBST.

Detection: ECL Basic Kit (RM00020).

Exposure time: 1s.