

A0133

Leader in Biomolecular Solutions for Life Science



## DUSP6 Rabbit mAb

Catalog No.: A0133

Recombinant

### Basic Information

#### Observed MW

42kDa

#### Calculated MW

42kDa

#### Category

Monoclonal Antibody

#### Applications

WB,IHC-P,IP,ELISA

#### Cross-Reactivity

Human,Mouse,Rat

#### CloneNo number

ARC0237

### Background

The protein encoded by this gene is a member of the dual specificity protein phosphatase subfamily. These phosphatases inactivate their target kinases by dephosphorylating both the phosphoserine/threonine and phosphotyrosine residues. They negatively regulate members of the mitogen-activated protein (MAP) kinase superfamily (MAPK/ERK, SAPK/JNK, p38), which are associated with cellular proliferation and differentiation. Different members of the family of dual specificity phosphatases show distinct substrate specificities for various MAP kinases, different tissue distribution and subcellular localization, and different modes of inducibility of their expression by extracellular stimuli. This gene product inactivates ERK2, is expressed in a variety of tissues with the highest levels in heart and pancreas, and unlike most other members of this family, is localized in the cytoplasm. Mutations in this gene have been associated with congenital hypogonadotropic hypogonadism. Alternatively spliced transcript variants have been found for this gene.

### Recommended Dilutions

**WB** 1:1000 - 1:2000

**IP** 0.5µg-4µg antibody for  
200µg-400µg extracts  
of whole cells

**IHC-P** 1:200 - 1:800

**ELISA** Recommended starting  
concentration is 1  
µg/mL. Please optimize  
the concentration  
based on your specific  
assay requirements. For  
high-ratio antibody  
dilutions ( $\geq 1:10000$ ), a  
sequential dilution  
method is strongly  
recommended to  
ensure measurement  
accuracy.

### Immunogen Information

#### Gene ID

1848

#### Swiss Prot

Q16828

#### Immunogen

Synthetic peptide. This information is considered to be commercially sensitive.

#### Synonyms

HH19; MKP3; PYST1; DUSP6

### Product Information

#### Source

Rabbit

#### Isotype

IgG

#### Purification

Affinity purification


#### Storage

Store at -20°C. Avoid freeze / thaw cycles.

Buffer: PBS containing 50% glycerol and 0.05% BSA, preserved with proclin300 or sodium azide (as specified on the Certificate of Analysis), pH 7.3.

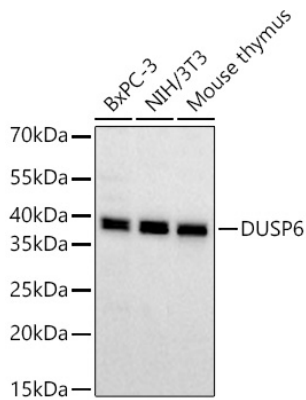
Contact

---

 [www.abclonal.com](http://www.abclonal.com)

---

## Validation Data



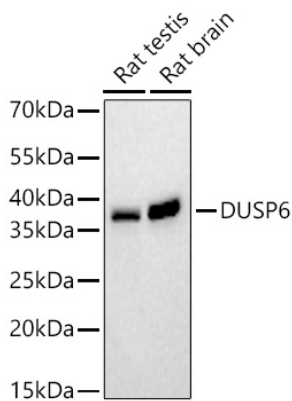
Western blot analysis of various lysates using DUSP6 Rabbit mAb (A0133) at 1:1000 dilution incubated at room temperature for 1.5 hours.  
Secondary antibody: HRP-conjugated Goat anti-Rabbit IgG (H+L) (AS014) at 1:10000 dilution.

Lysates/proteins: 25 µg per lane.

Blocking buffer: 3% nonfat dry milk in TBST.

Detection: ECL Basic Kit (RM00020).

Exposure time: 45s.



Western blot analysis of various lysates using DUSP6 Rabbit mAb (A0133) at 1:1000 dilution incubated at room temperature for 1.5 hours.

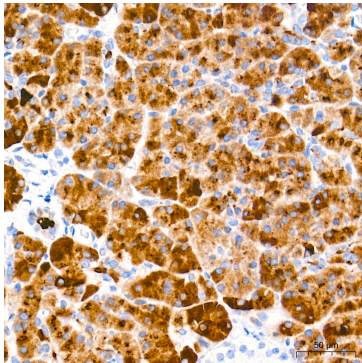
Secondary antibody: HRP-conjugated Goat anti-Rabbit IgG (H+L) (AS014) at 1:10000 dilution.

Lysates/proteins: 25 µg per lane.

Blocking buffer: 3% nonfat dry milk in TBST.

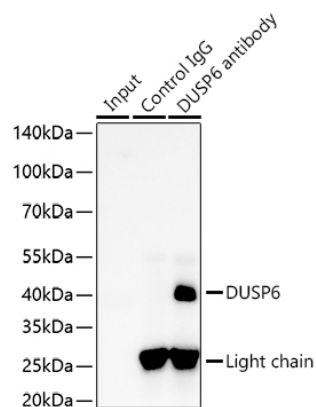
Detection: ECL Basic Kit (RM00020).

Exposure time: 90s.



Immunohistochemistry analysis of paraffin-embedded Human pancreas tissue using DUSP6 Rabbit mAb (A0133) at a dilution of 1:500 (40x lens). High pressure antigen retrieval performed with 0.01M Tris-EDTA Buffer (pH 9.0) prior to IHC staining.

## Validation Data



Immunoprecipitation of DUSP6 from 300 µg extracts of Hep G2 cells was performed using 2 µg of DUSP6 Rabbit mAb (A0133). Rabbit Control IgG (AC005) was used to precipitate the Control IgG sample. IP samples were eluted with 1x Laemmli Buffer. The Input lane represents 10% of the total input. Western blot analysis of immunoprecipitates was conducted using DUSP6 Rabbit mAb (A0133) at a dilution of 1:10000.