

A0092

Leader in Biomolecular Solutions for Life Science



RANBP3 Rabbit mAb

Catalog No.: A0092

Recombinant

Basic Information

Observed MW

Refer to figures

Calculated MW

60kDa

Category

SMab Recombinant Monoclonal
Antibody

Applications

IHC-P,ELISA

Cross-Reactivity

Mouse,Rat

CloneNo number

ARC2496

Background

This gene encodes a protein with a RanBD1 domain that is found in both the nucleus and cytoplasm. This protein plays a role in nuclear export as part of a heteromeric complex. Alternate transcriptional splice variants, encoding different isoforms, have been characterized.

Recommended Dilutions

IHC-P 1:50 - 1:200

ELISA Recommended starting concentration is 1 µg/mL. Please optimize the concentration based on your specific assay requirements.

Immunogen Information

Gene ID
8498

Swiss Prot
Q9H6Z4

Immunogen

A synthetic peptide corresponding to a sequence within amino acids 1-100 of human RANBP3 (Q9H6Z4).

Synonyms

RANBP3; ran-binding protein 3

Contact



www.abclonal.com

Product Information

Source
Rabbit

Isotype
IgG

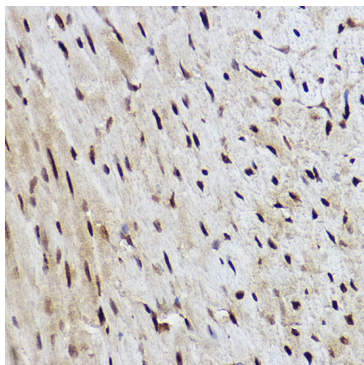
Purification
Affinity purification

Storage

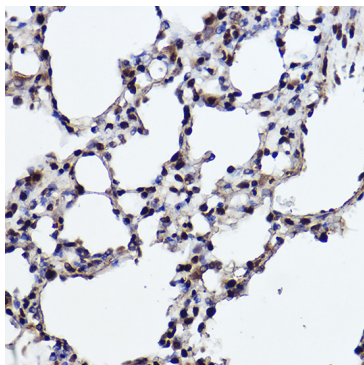
Store at -20°C. Avoid freeze / thaw cycles.

Buffer: PBS with 0.02% sodium azide,0.05% BSA,50% glycerol,pH7.3.

Validation Data



Immunohistochemistry analysis of paraffin-embedded Mouse heart using RANBP3 Rabbit mAb (A0092) at dilution of 1:100 (40x lens). High pressure antigen retrieval performed with 0.01M Citrate buffer (pH 6.0) prior to IHC staining.



Immunohistochemistry analysis of paraffin-embedded Rat lung using RANBP3 Rabbit mAb (A0092) at dilution of 1:100 (40x lens). High pressure antigen retrieval performed with 0.01M Citrate buffer (pH 6.0) prior to IHC staining.